

## Product datasheet for **TA343845**

### CPSF73 (CPSF3) Rabbit Polyclonal Antibody

#### Product data:

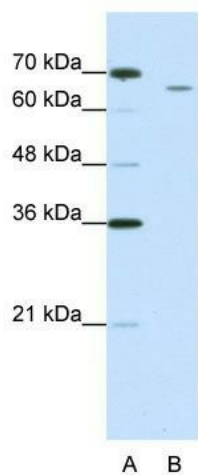
Product Type:	Primary Antibodies
Applications:	IHC, WB
Recommended Dilution:	WB, IHC
Reactivity:	Human
Host:	Rabbit
Isotype:	IgG
Clonality:	Polyclonal
Immunogen:	The immunogen for anti-CPSF3 antibody: synthetic peptide directed towards the C terminal of human CPSF3. Synthetic peptide located within the following region: DDSILSVTVDGKTANLNLETRTVECEEGSEDDDESLREMVELAAQRLYEAL
Formulation:	Liquid. Purified antibody supplied in 1x PBS buffer with 0.09% (w/v) sodium azide and 2% sucrose. <i>Note that this product is shipped as lyophilized powder to China customers.</i>
Purification:	Protein A purified
Conjugation:	Unconjugated
Storage:	Store at -20°C as received.
Stability:	Stable for 12 months from date of receipt.
Predicted Protein Size:	75 kDa
Gene Name:	cleavage and polyadenylation specific factor 3
Database Link:	<a href="#">NP_057291</a> <a href="#">Entrez Gene 51692 Human</a> <a href="#">Q9UKF6</a>
Background:	CPSF3 belongs to the RNA-metabolizing metallo-beta-lactamase-like family, CPSF3 subfamily. It is component of the cleavage and polyadenylation specificity factor (CPSF) complex that play a key role in pre-mRNA 3'-end formation, recognizing the AAUAAA signal sequence and interacting with poly(A) polymerase and other factors to bring about cleavage and poly(A) addition.
Synonyms:	CPSF-73; CPSF73



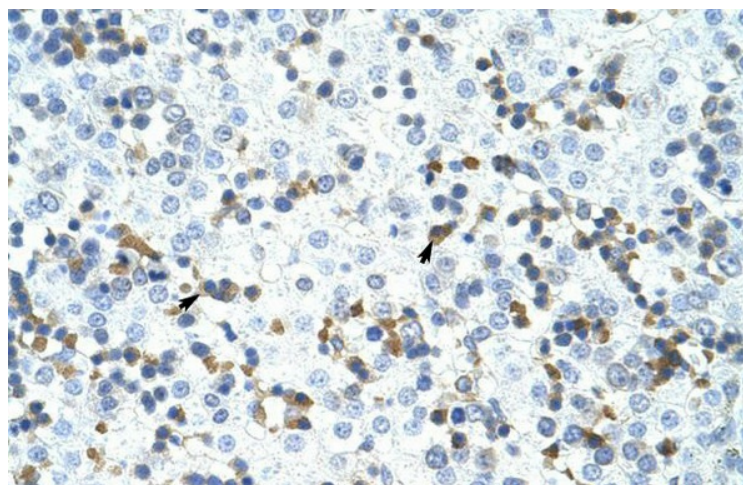
[View online »](#)

**Note:** Immunogen Sequence Homology: Human: 100%; Dog: 93%; Pig: 93%; Rat: 93%; Horse: 93%; Mouse: 93%; Bovine: 93%; Guinea pig: 93%; Rabbit: 86%

### Product images:



WB Suggested Anti-CPSF3 Antibody Titration:  
1.25 ug/ml; ELISA Titer: 1: 62500; Positive Control:  
Jurkat cell lysate



Rabbit Anti-CPSF3 Antibody; Paraffin Embedded  
Tissue: Human Liver; Cellular Data: Liver cells;  
Antibody Concentration: 4.0-8.0 ug/ml;  
Magnification: 400X