

Product datasheet for **TA343844**

CPSF73 (CPSF3) Rabbit Polyclonal Antibody

Product data:

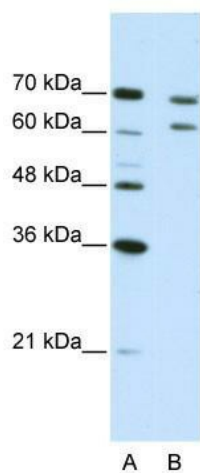
Product Type:	Primary Antibodies
Applications:	WB
Recommended Dilution:	WB
Reactivity:	Human
Host:	Rabbit
Isotype:	IgG
Clonality:	Polyclonal
Immunogen:	The immunogen for anti-CPSF3 antibody: synthetic peptide directed towards the N terminal of human CPSF3. Synthetic peptide located within the following region: MAAEIPNIKPDILIIESTYGTTHIHEKREEREARFCNTVHDIVNRGGRGLI
Formulation:	Liquid. Purified antibody supplied in 1x PBS buffer with 0.09% (w/v) sodium azide and 2% sucrose. <i>Note that this product is shipped as lyophilized powder to China customers.</i>
Purification:	Protein A purified
Conjugation:	Unconjugated
Storage:	Store at -20°C as received.
Stability:	Stable for 12 months from date of receipt.
Predicted Protein Size:	75 kDa
Gene Name:	cleavage and polyadenylation specific factor 3
Database Link:	NP_057291 Entrez Gene 51692 Human Q9UKF6
Background:	CPSF3 belongs to the RNA-metabolizing metallo-beta-lactamase-like family, CPSF3 subfamily. It is component of the cleavage and polyadenylation specificity factor (CPSF) complex that play a key role in pre-mRNA 3'-end formation, recognizing the AAUAAA signal sequence and interacting with poly(A) polymerase and other factors to bring about cleavage and poly(A) addition.
Synonyms:	CPSF-73; CPSF73



[View online »](#)

Note: Immunogen Sequence Homology: Dog: 100%; Pig: 100%; Rat: 100%; Horse: 100%; Human: 100%; Mouse: 100%; Bovine: 100%; Rabbit: 100%; Zebrafish: 100%; Guinea pig: 100%

Product images:



WB Suggested Anti-CPSF3 Antibody Titration: 5.0 ug/ml; ELISA Titer: 1: 312500; Positive Control: Jurkat cell lysate