

Product datasheet for **TA343842**

NIP7 Rabbit Polyclonal Antibody

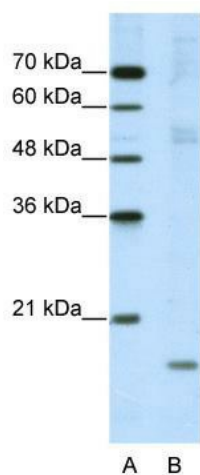
Product data:

Product Type:	Primary Antibodies
Applications:	IHC, WB
Recommended Dilution:	WB, IHC
Reactivity:	Human
Host:	Rabbit
Isotype:	IgG
Clonality:	Polyclonal
Immunogen:	The immunogen for anti-NIP7 antibody: synthetic peptide directed towards the C terminal of human NIP7. Synthetic peptide located within the following region: VVVYSMADIPLGFGVAAKSTQDCRKVDPMIAIVVFHQADIGEYVRHEETLT
Formulation:	Liquid. Purified antibody supplied in 1x PBS buffer with 0.09% (w/v) sodium azide and 2% sucrose. <i>Note that this product is shipped as lyophilized powder to China customers.</i>
Purification:	Protein A purified
Conjugation:	Unconjugated
Storage:	Store at -20°C as received.
Stability:	Stable for 12 months from date of receipt.
Predicted Protein Size:	20 kDa
Gene Name:	NIP7, nucleolar pre-rRNA processing protein
Database Link:	NP_057185 Entrez Gene 51388 Human Q9Y221
Background:	NIP7 contains 1PUA domain and belongs to the NIP7 family. It may play a role in 60S ribosomal subunit synthesis.
Synonyms:	CGI-37; HSPC031; KD93
Note:	Immunogen Sequence Homology: Dog: 100%; Pig: 100%; Horse: 100%; Human: 100%; Mouse: 100%; Bovine: 100%; Rat: 93%; Rabbit: 93%; Guinea pig: 93%; Yeast: 79%; Zebrafish: 79%

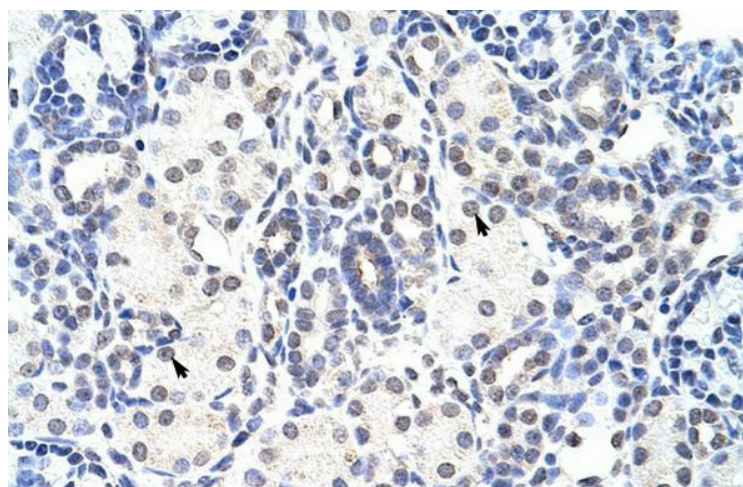


[View online »](#)

Product images:



WB Suggested Anti-NIP7 Antibody Titration: 5.0 ug/ml; ELISA Titer: 1: 62500; Positive Control: HepG2 cell lysate; NIP7 is supported by BioGPS gene expression data to be expressed in HepG2



Rabbit Anti-NIP7 Antibody; Paraffin Embedded Tissue: Human Kidney; Cellular Data: Epithelial cells of renal tubule; Antibody Concentration: 4.0-8.0 ug/ml; Magnification: 400X