

## Product datasheet for TA343841

### NIP7 Rabbit Polyclonal Antibody

#### Product data:

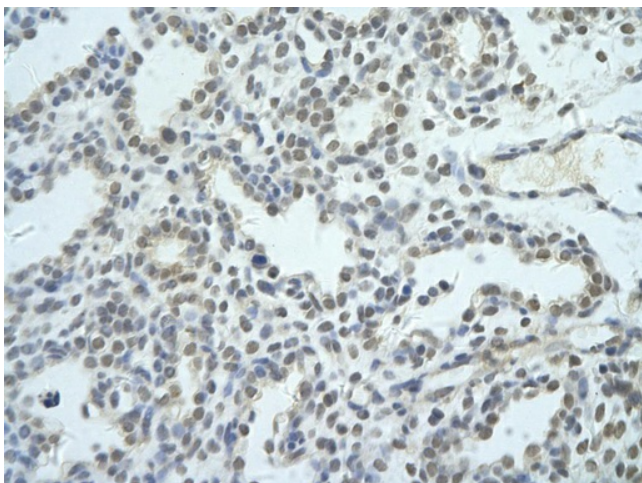
Product Type:	Primary Antibodies
Applications:	IHC, WB
Recommended Dilution:	WB
Reactivity:	Human
Host:	Rabbit
Isotype:	IgG
Clonality:	Polyclonal
Immunogen:	The immunogen for anti-NIP7 antibody: synthetic peptide directed towards the middle region of human NIP7. Synthetic peptide located within the following region: PGAEQSFLYGNHVLKSGLGRLTENTSQYQGQVWVYSMADIPLGFGVAAKST
Formulation:	Liquid. Purified antibody supplied in 1x PBS buffer with 0.09% (w/v) sodium azide and 2% sucrose.
Purification:	Affinity Purified
Conjugation:	Unconjugated
Storage:	Store at -20°C as received.
Stability:	Stable for 12 months from date of receipt.
Predicted Protein Size:	20 kDa
Gene Name:	NIP7, nucleolar pre-rRNA processing protein
Database Link:	<a href="#">NP_057185</a> <a href="#">Entrez Gene 51388 Human</a> <a href="#">Q9Y221</a>
Background:	NIP7 contains 1PUA domain and belongs to the NIP7 family. It may play a role in 60S ribosomal subunit synthesis.
Synonyms:	CGI-37; HSPC031; KD93
Note:	Immunogen Sequence Homology: Pig: 100%; Rat: 100%; Horse: 100%; Human: 100%; Mouse: 100%; Bovine: 100%; Dog: 93%; Rabbit: 93%; Guinea pig: 93%; Zebrafish: 86%



[View online »](#)

**Product images:**

WB Suggested Anti-NIP7 Antibody Titration: 0.2-1 ug/ml; ELISA Titer: 1: 312500; Positive Control: SW620 cell lysate; NIP7 is supported by BioGPS gene expression data to be expressed in SW620



Rabbit Anti-NIP7 antibody; Paraffin Embedded Tissue: Human Lung cell Cellular Data: alveolar cell of renal tubule; Antibody Concentration: 4.0-8.0 ug/ml; Magnification: 400X