

Product datasheet for **TA343840**

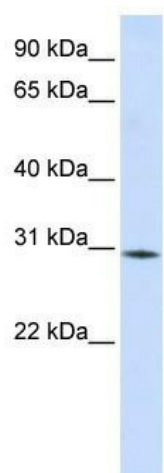
RBM7 Rabbit Polyclonal Antibody

Product data:

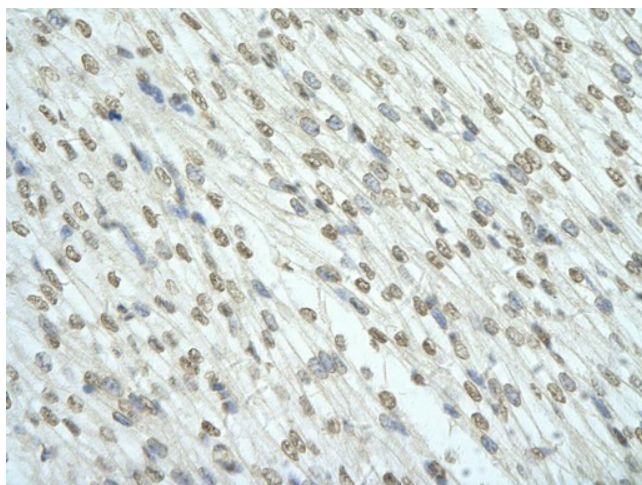
Product Type:	Primary Antibodies
Applications:	IHC, WB
Recommended Dilution:	WB
Reactivity:	Human
Host:	Rabbit
Isotype:	IgG
Clonality:	Polyclonal
Immunogen:	The immunogen for anti-RBM7 antibody: synthetic peptide directed towards the middle region of human RBM7. Synthetic peptide located within the following region: SFNQSSSSQWRQGTSSQRKVRMNSYPYLADRHYSREQRYTDHGSDHHYR
Formulation:	Liquid. Purified antibody supplied in 1x PBS buffer with 0.09% (w/v) sodium azide and 2% sucrose. <i>Note that this product is shipped as lyophilized powder to China customers.</i>
Purification:	Affinity Purified
Conjugation:	Unconjugated
Storage:	Store at -20°C as received.
Stability:	Stable for 12 months from date of receipt.
Predicted Protein Size:	30 kDa
Gene Name:	RNA binding motif protein 7
Database Link:	NP_057174 Entrez Gene 10179 Human Q9Y580
Background:	RBM7 contains 1 RRM (RNA recognition motif) domain. It is possible involved in germ cell RNA processing and meiosis.
Synonyms:	FLJ11153
Note:	Immunogen Sequence Homology: Rat: 100%; Human: 100%; Dog: 93%; Pig: 93%; Mouse: 92%; Guinea pig: 86%; Rabbit: 85%; Bovine: 79%



[View online »](#)

Product images:

WB Suggested Anti-RBM7 Antibody Titration: 0.2-1 ug/ml; ELISA Titer: 1: 312500; Positive Control: Human Liver



Rabbit Anti-RBM7 antibody; Paraffin Embedded Tissue: Human Heart cell Cellular Data: cardiac cell of renal tubule; Antibody Concentration: 4.0-8.0 ug/ml; Magnification: 400X