

## Product datasheet for **TA343838**

### **SF3B14 (SF3B6) Rabbit Polyclonal Antibody**

#### **Product data:**

Product Type:	Primary Antibodies
Applications:	WB
Recommended Dilution:	WB
Reactivity:	Human
Host:	Rabbit
Isotype:	IgG
Clonality:	Polyclonal
Immunogen:	The immunogen for anti-SF3B14 antibody: synthetic peptide directed towards the N terminal of human SF3B14. Synthetic peptide located within the following region: MAMQAAKRANIRLPPEVNRILYIRNLPYKITAEEMYDIFGKYGPIRQIRV
Formulation:	Liquid. Purified antibody supplied in 1x PBS buffer with 0.09% (w/v) sodium azide and 2% sucrose. <i>Note that this product is shipped as lyophilized powder to China customers.</i>
Purification:	Affinity Purified
Conjugation:	Unconjugated
Storage:	Store at -20°C as received.
Stability:	Stable for 12 months from date of receipt.
Predicted Protein Size:	14 kDa
Gene Name:	splicing factor 3b subunit 6
Database Link:	<a href="#">NP_057131</a> <a href="#">Entrez Gene 51639 Human</a> <a href="#">Q9Y3B4</a>



[View online »](#)

**Background:**

SF3B14 is a 14 kDa protein subunit of the splicing factor 3b complex. Splicing factor 3b associates with both the U2 and U11/U12 small nuclear ribonucleoprotein complexes (U2 snRNP) of spliceosomes. This 14 kDa protein interacts directly with subunit 1 of the splicing factor 3b complex. SF3B14 also interacts directly with the adenosine that carries out the first transesterification step of splicing at the pre-mRNA branch site. This gene encodes a 14 kDa protein subunit of the splicing factor 3b complex. Splicing factor 3b associates with both the U2 and U11/U12 small nuclear ribonucleoprotein complexes (U2 snRNP) of spliceosomes. This 14 kDa protein interacts directly with subunit 1 of the splicing factor 3b complex. This 14 kDa protein also interacts directly with the adenosine that carries out the first transesterification step of splicing at the pre-mRNA branch site.

**Synonyms:**

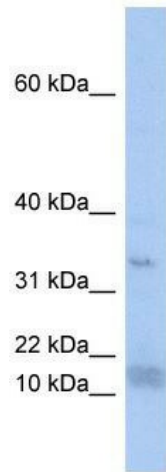
CGI-110; HSPC175; Ht006; P14; SAP14; SAP14a; SF3B14; SF3B14a

**Note:**

Immunogen Sequence Homology: Dog: 100%; Pig: 100%; Rat: 100%; Horse: 100%; Human: 100%; Mouse: 100%; Bovine: 100%; Rabbit: 100%; Zebrafish: 100%; Guinea pig: 100%

**Protein Pathways:**

Spliceosome

**Product images:**

WB Suggested Anti-SF3B14 Antibody Titration:  
0.2-1 ug/ml; ELISA Titer: 1: 312500; Positive  
Control: THP-1 cell lysate