

## Product datasheet for **TA343837**

### EXOSC3 Rabbit Polyclonal Antibody

#### Product data:

Product Type:	Primary Antibodies
Applications:	WB
Recommended Dilution:	WB
Reactivity:	Human
Host:	Rabbit
Isotype:	IgG
Clonality:	Polyclonal
Immunogen:	The immunogen for Anti-EXOSC3 antibody is: synthetic peptide directed towards the C-terminal region of Human EXOSC3. Synthetic peptide located within the following region: RNRPNVQVGDLIYGQFVWANKDMEPEMVCIDSCGRANGMGVIGQDGLLFK
Formulation:	Liquid. Purified antibody supplied in 1x PBS buffer with 0.09% (w/v) sodium azide and 2% sucrose. <i>Note that this product is shipped as lyophilized powder to China customers.</i>
Purification:	Affinity Purified
Conjugation:	Unconjugated
Storage:	Store at -20°C as received.
Stability:	Stable for 12 months from date of receipt.
Predicted Protein Size:	30 kDa
Gene Name:	exosome component 3
Database Link:	<a href="#">NP_057126</a> <a href="#">Entrez Gene 51010 Human Q9NQ5</a>
Background:	EXOSC3 is component of the exosome 3'->5' exoribonuclease complex and is required for the 3' processing of the 7S pre-RNA to the mature 5.8S rRNA.
Synonyms:	bA3J10.7; CGI-102; hRrp-40; p10; PCH1B; RRP40; Rrp40p
Note:	Immunogen Sequence Homology: Pig: 100%; Rat: 100%; Horse: 100%; Human: 100%; Mouse: 100%; Bovine: 100%; Rabbit: 100%; Guinea pig: 100%; Dog: 93%; Zebrafish: 86%; Yeast: 75%

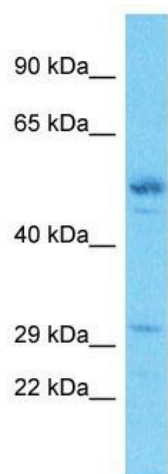


[View online »](#)

Protein Families: Stem cell - Pluripotency

Protein Pathways: RNA degradation

### Product images:



Host: Rabbit

Target Name: EXOSC3

Sample Tissue: Esophagus Tumor Lysate

Antibody Dilution: 1.0 $\mu$ g/ml

Host: Rabbit; Target Name: EXOSC3; Sample Tissue: Esophagus Tumor lysates; Antibody Dilution: 1.0 ug/ml