

Product datasheet for **TA343836**

EXOSC3 Rabbit Polyclonal Antibody

Product data:

Product Type:	Primary Antibodies
Applications:	IHC, WB
Recommended Dilution:	WB, IHC
Reactivity:	Human
Host:	Rabbit
Isotype:	IgG
Clonality:	Polyclonal
Immunogen:	The immunogen for anti-EXOSC3 antibody: synthetic peptide directed towards the C terminal of human EXOSC3. Synthetic peptide located within the following region: PLEIVFGMNGRIWVKAKTIQQTLLANILEACEHMTSDQRKQIFSRLAES
Formulation:	Liquid. Purified antibody supplied in 1x PBS buffer with 0.09% (w/v) sodium azide and 2% sucrose. <i>Note that this product is shipped as lyophilized powder to China customers.</i>
Purification:	Protein A purified
Conjugation:	Unconjugated
Storage:	Store at -20°C as received.
Stability:	Stable for 12 months from date of receipt.
Predicted Protein Size:	30 kDa
Gene Name:	exosome component 3
Database Link:	NP_057126 Entrez Gene 51010 Human Q9NQ5
Background:	EXOSC3 is component of the exosome 3'->5' exoribonuclease complex and is required for the 3' processing of the 7S pre-RNA to the mature 5.8S rRNA.
Synonyms:	bA3J10.7; CGI-102; hRrp-40; p10; PCH1B; RRP40; Rrp40p
Note:	Immunogen Sequence Homology: Dog: 100%; Pig: 100%; Horse: 100%; Human: 100%; Bovine: 100%; Rabbit: 100%; Rat: 92%; Mouse: 85%; Guinea pig: 85%

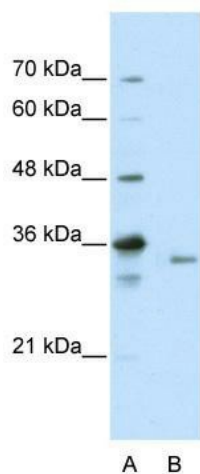


[View online »](#)

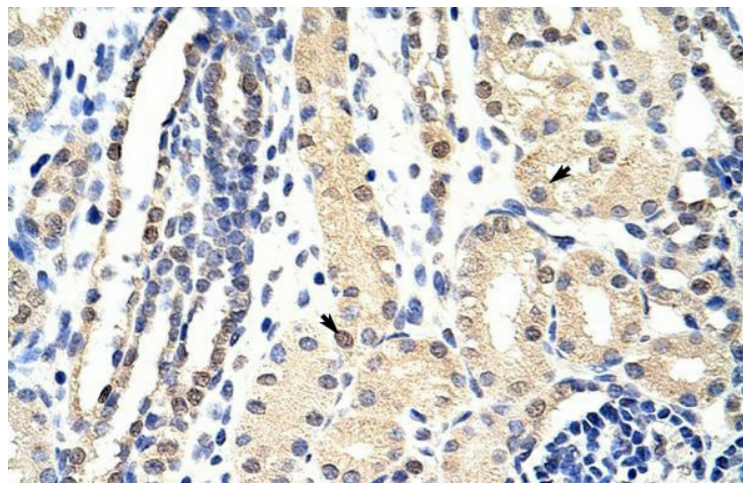
Protein Families: Stem cell - Pluripotency

Protein Pathways: RNA degradation

Product images:



WB Suggested Anti-EXOSC3 Antibody Titration: 2.5 ug/ml; ELISA Titer: 1: 312500; Positive Control: HepG2 cell lysate



Rabbit Anti-EXOSC3 Antibody; Paraffin Embedded Tissue: Human Kidney; Cellular Data: Epithelial cells of renal tubule; Antibody Concentration: 4.0-8.0 ug/ml; Magnification: 400X