

## Product datasheet for **TA343835**

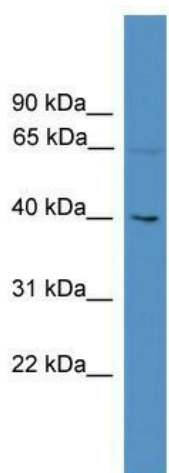
### UTP18 Rabbit Polyclonal Antibody

#### Product data:

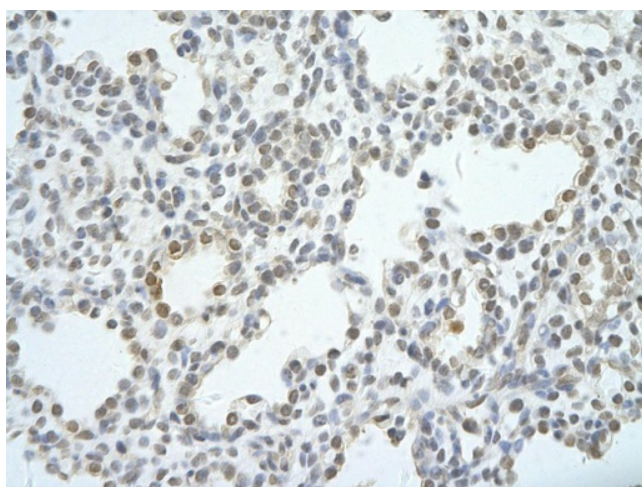
Product Type:	Primary Antibodies
Applications:	IHC, WB
Recommended Dilution:	WB
Reactivity:	Human
Host:	Rabbit
Isotype:	IgG
Clonality:	Polyclonal
Immunogen:	The immunogen for anti-UTP18 antibody: synthetic peptide directed towards the N terminal of human UTP18. Synthetic peptide located within the following region: PARPSAAAAIAVAAAEERLRQRNRLRLEEDKPAVERCLEELVFGDVE
Formulation:	Liquid. Purified antibody supplied in 1x PBS buffer with 0.09% (w/v) sodium azide and 2% sucrose. <i>Note that this product is shipped as lyophilized powder to China customers.</i>
Purification:	Affinity Purified
Conjugation:	Unconjugated
Storage:	Store at -20°C as received.
Stability:	Stable for 12 months from date of receipt.
Predicted Protein Size:	62 kDa
Gene Name:	UTP18, small subunit processome component
Database Link:	<a href="#">NP_057085</a> <a href="#">Entrez Gene 51096 Human</a> <a href="#">Q9Y5J1</a>
Background:	UTP18 is involved in nucleolar processing of pre-18S ribosomal RNA.
Synonyms:	CGI-48; WDR50
Note:	Immunogen Sequence Homology: Human: 100%; Dog: 93%; Rabbit: 92%; Pig: 86%



[View online »](#)

**Product images:**

WB Suggested Anti-UTP18 Antibody Titration: 0.2-1 ug/ml; ELISA Titer: 1: 62500; Positive Control: Jurkat cell lysate; UTP18 is supported by BioGPS gene expression data to be expressed in Jurkat



Rabbit Anti-UTP18 antibody; Paraffin Embedded Tissue: Human Lung cell Cellular Data: alveolar cell of renal tubule; Antibody Concentration: 4.0-8.0 ug/ml; Magnification: 400X