

Product datasheet for **TA343833**

RRP7A Rabbit Polyclonal Antibody

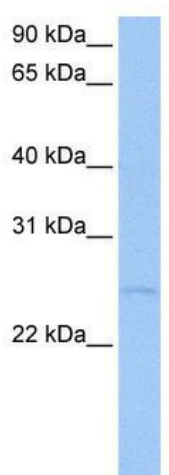
Product data:

Product Type:	Primary Antibodies
Applications:	WB
Recommended Dilution:	WB
Reactivity:	Human
Host:	Rabbit
Isotype:	IgG
Clonality:	Polyclonal
Immunogen:	The immunogen for anti-CTA-126B4.3 antibody: synthetic peptide directed towards the N terminal of human CTA-126B4.3. Synthetic peptide located within the following region: NVPPYCTEESLSRLLSTCGLVQSVELQEKPDLAESPKESRSKFFHPKPVP
Formulation:	Liquid. Purified antibody supplied in 1x PBS buffer with 0.09% (w/v) sodium azide and 2% sucrose. <i>Note that this product is shipped as lyophilized powder to China customers.</i>
Purification:	Affinity Purified
Conjugation:	Unconjugated
Storage:	Store at -20°C as received.
Stability:	Stable for 12 months from date of receipt.
Predicted Protein Size:	32 kDa
Gene Name:	ribosomal RNA processing 7 homolog A
Database Link:	NP_056518 Entrez Gene 27341 Human Q9Y3A4
Background:	The exact function of CTA-126B4.3 remains unknown.
Synonyms:	BK126B4.3; CGI-96
Note:	Immunogen Sequence Homology: Rat: 100%; Horse: 100%; Human: 100%; Pig: 92%; Mouse: 92%; Bovine: 92%; Dog: 83%; Rabbit: 83%; Guinea pig: 75%



[View online »](#)

Product images:



WB Suggested Anti-CTA-126B4.3 Antibody
Titration: 0.2-1 ug/ml; Positive Control: MCF7 cell
lysate