

Product datasheet for **TA343832**

Rrp7a Rabbit Polyclonal Antibody

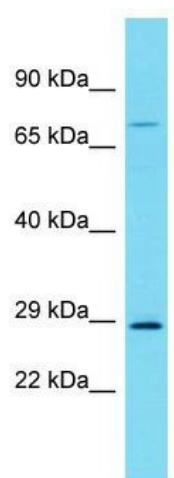
Product data:

Product Type:	Primary Antibodies
Applications:	WB
Recommended Dilution:	WB
Reactivity:	Rat
Host:	Rabbit
Isotype:	IgG
Clonality:	Polyclonal
Immunogen:	The immunogen for Anti-Rrp7a antibody is: synthetic peptide directed towards the C-terminal region of Rat Rrp7a. Synthetic peptide located within the following region: KERRKRARKELLSFYAWQHRETKEHMLAQLRKKFEEDKQRIELMRAQRKF
Formulation:	Liquid. Purified antibody supplied in 1x PBS buffer with 0.09% (w/v) sodium azide and 2% sucrose. <i>Note that this product is shipped as lyophilized powder to China customers.</i>
Purification:	Affinity Purified
Conjugation:	Unconjugated
Storage:	Store at -20°C as received.
Stability:	Stable for 12 months from date of receipt.
Predicted Protein Size:	30 kDa
Gene Name:	ribosomal RNA processing 7 homolog A
Database Link:	NP_001124040 Entrez Gene 362967 Rat
Background:	The function of this protein remains unknown.
Synonyms:	BK126B4.3; CGI-96; CTA-126B4.5; MGC150422; MGC150423
Note:	Immunogen Sequence Homology: Dog: 100%; Pig: 100%; Rat: 100%; Horse: 100%; Human: 100%; Mouse: 100%; Guinea pig: 100%; Zebrafish: 92%; Yeast: 77%



[View online »](#)

Product images:



Host: Rabbit; Target Name: Rrp7a; Sample Tissue: Rat Spleen lysates; Antibody Dilution: 1.0 ug/ml