

Product datasheet for **TA343831**

UPF2 Rabbit Polyclonal Antibody

Product data:

Product Type:	Primary Antibodies
Applications:	WB
Recommended Dilution:	WB
Reactivity:	Human
Host:	Rabbit
Isotype:	IgG
Clonality:	Polyclonal
Immunogen:	The immunogen for anti-UPF2 antibody: synthetic peptide directed towards the N terminal of human UPF2. Synthetic peptide located within the following region: KAPEDKKKRLEDDKRKKEDKERKKKDEEKVKAEEESKKKEEEEEKKKHQEE
Formulation:	Liquid. Purified antibody supplied in 1x PBS buffer with 0.09% (w/v) sodium azide and 2% sucrose. <i>Note that this product is shipped as lyophilized powder to China customers.</i>
Purification:	Affinity Purified
Conjugation:	Unconjugated
Storage:	Store at -20°C as received.
Stability:	Stable for 12 months from date of receipt.
Predicted Protein Size:	148 kDa
Gene Name:	UPF2 regulator of nonsense transcripts homolog (yeast)
Database Link:	NP_056357 Entrez Gene 26019 Human Q9HAU5



[View online »](#)

Background:

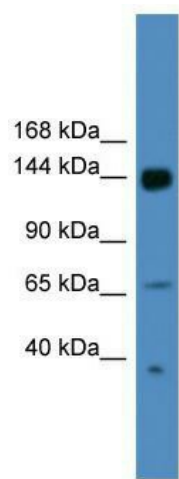
This gene encodes a protein that is part of a post-splicing multiprotein complex involved in both mRNA nuclear export and mRNA surveillance. mRNA surveillance detects exported mRNAs with truncated open reading frames and initiates nonsense-mediated mRNA decay (NMD). When translation ends upstream from the last exon-exon junction, this triggers NMD to degrade mRNAs containing premature stop codons. This protein is located in the perinuclear area. It interacts with translation release factors and the proteins that are functional homologs of yeast Upf1p and Upf3p. Two splice variants have been found for this gene; both variants encode the same protein.

Synonyms:

HUPF2; RENT2; smg-3

Note:

Immunogen Sequence Homology: Human: 100%; Dog: 93%; Pig: 93%; Bovine: 93%; Rat: 86%; Horse: 86%; Mouse: 86%; Yeast: 86%; Zebrafish: 86%

Product images:

WB Suggested Anti-UPF2 Antibody Titration: 0.2-1 ug/ml; ELISA Titer: 1: 62500; Positive Control: HepG2 cell lysate