

## Product datasheet for **TA343829**

### Pumilio 2 (PUM2) Rabbit Polyclonal Antibody

#### Product data:

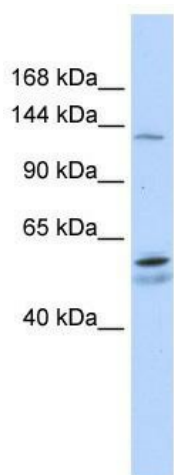
Product Type:	Primary Antibodies
Applications:	WB
Recommended Dilution:	WB
Reactivity:	Human
Host:	Rabbit
Isotype:	IgG
Clonality:	Polyclonal
Immunogen:	The immunogen for anti-PUM2 antibody: synthetic peptide directed towards the N terminal of human PUM2. Synthetic peptide located within the following region: MNHDFQALALESRGMGELLPTKKFWEPDDSTKDGQKIGFLGDDEWRETAW
Formulation:	Liquid. Purified antibody supplied in 1x PBS buffer with 0.09% (w/v) sodium azide and 2% sucrose. <i>Note that this product is shipped as lyophilized powder to China customers.</i>
Purification:	Affinity Purified
Conjugation:	Unconjugated
Storage:	Store at -20°C as received.
Stability:	Stable for 12 months from date of receipt.
Predicted Protein Size:	114 kDa
Gene Name:	pumilio RNA binding family member 2
Database Link:	<a href="#">NP_056132</a> <a href="#">Entrez Gene 23369 Human</a> <a href="#">Q8TB72</a>
Background:	PUM2 is a sequence-specific RNA-binding protein that regulates translation and mRNA stability by binding the 3' UTR of mRNA targets. Its interactions and tissue specificity suggest that it may be required to support proliferation and self-renewal of stem cells by regulating the translation of key transcripts.
Synonyms:	PUMH2; PUML2



[View online »](#)

**Note:** Immunogen Sequence Homology: Dog: 100%; Pig: 100%; Rat: 100%; Horse: 100%; Human: 100%; Mouse: 100%; Bovine: 100%; Rabbit: 100%; Guinea pig: 100%; Zebrafish: 79%

### Product images:



WB Suggested Anti-PUM2 Antibody Titration: 0.2-1 ug/ml; ELISA Titer: 1: 312500; Positive Control: Human Liver