

Product datasheet for **TA343827**

CSTF2T Rabbit Polyclonal Antibody

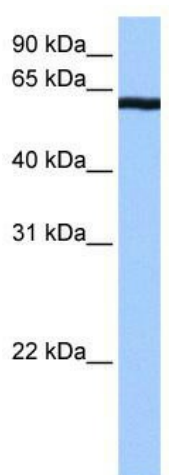
Product data:

Product Type:	Primary Antibodies
Applications:	IF, WB
Recommended Dilution:	WB
Reactivity:	Human
Host:	Rabbit
Isotype:	IgG
Clonality:	Polyclonal
Immunogen:	The immunogen for anti-CSTF2T antibody: synthetic peptide directed towards the C terminal of human CSTF2T. Synthetic peptide located within the following region: MRGPVPSSRGPMTGGIQGPGPINIGAGGPPQGPRQVPGISGVGNPGAGMQ
Formulation:	Liquid. Purified antibody supplied in 1x PBS buffer with 0.09% (w/v) sodium azide and 2% sucrose. <i>Note that this product is shipped as lyophilized powder to China customers.</i>
Purification:	Affinity Purified
Conjugation:	Unconjugated
Storage:	Store at -20°C as received.
Stability:	Stable for 12 months from date of receipt.
Predicted Protein Size:	64 kDa
Gene Name:	cleavage stimulation factor subunit 2, tau variant
Database Link:	NP_056050 Entrez Gene 23283 Human Q9H0L4
Background:	CSTF2T may play a significant role in AAUAAA-independent mRNA polyadenylation in germ cells. It is directly involved in the binding to pre-mRNAs.
Synonyms:	CstF-64T
Note:	Immunogen Sequence Homology: Human: 100%; Rabbit: 91%; Dog: 86%; Pig: 86%; Horse: 86%; Bovine: 86%; Guinea pig: 86%; Rat: 85%; Mouse: 85%

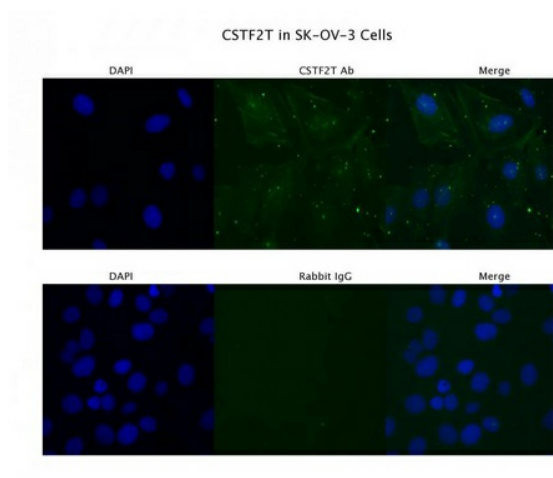


[View online »](#)

Product images:



WB Suggested Anti-CSTF2T Antibody Titration: 0.2-1 ug/ml; Positive Control: Human brain



Sample Type: SKOV3; Primary Antibody Dilution: 4 ug/ml; Secondary Antibody: Anti-rabbit Alexa 546; Secondary Antibody Dilution: 2 ug/ml; Gene Name: CSTF2T