

Product datasheet for **TA343825**

Larp4b Rabbit Polyclonal Antibody

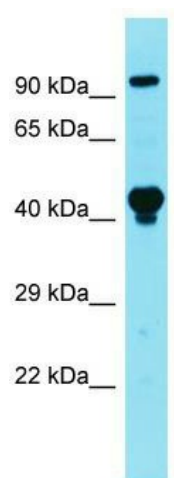
Product data:

Product Type:	Primary Antibodies
Applications:	WB
Recommended Dilution:	WB
Reactivity:	Mouse
Host:	Rabbit
Isotype:	IgG
Clonality:	Polyclonal
Immunogen:	The immunogen for Anti-Larp4b antibody is: synthetic peptide directed towards the middle region of Mouse Larp4b. Synthetic peptide located within the following region: ENNDTGGNESQPESQEDPREVLKKTLEFCLSRENLASDMYLISQMDSQY
Formulation:	Liquid. Purified antibody supplied in 1x PBS buffer with 0.09% (w/v) sodium azide and 2% sucrose.
Purification:	Affinity Purified
Conjugation:	Unconjugated
Storage:	Store at -20°C as received.
Stability:	Stable for 12 months from date of receipt.
Predicted Protein Size:	81 kDa
Gene Name:	La ribonucleoprotein domain family, member 4B
Database Link:	NP_766173 Entrez Gene 217980 Mouse Q6A0A2
Background:	The function of this protein remains unknown.
Synonyms:	DKFZp686M23113; KIAA0217; LARP5
Note:	Immunogen Sequence Homology: Human: 100%; Horse: 93%; Rat: 92%; Pig: 86%; Rabbit: 86%; Mouse: 85%; Bovine: 85%; Guinea pig: 79%



[View online »](#)

Product images:



Host: Rabbit; Target Name: Larp4b; Sample
Tissue: Mouse Thymus lysates; Antibody Dilution:
1.0 ug/ml