

Product datasheet for **TA343823**

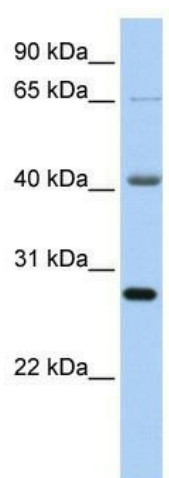
RBM34 Rabbit Polyclonal Antibody

Product data:

Product Type:	Primary Antibodies
Applications:	WB
Recommended Dilution:	WB
Reactivity:	Human
Host:	Rabbit
Isotype:	IgG
Clonality:	Polyclonal
Immunogen:	The immunogen for anti-RBM34 antibody: synthetic peptide directed towards the C terminal of human RBM34. Synthetic peptide located within the following region: SKPKQGLNFTSKTAEGHPKSLFIGEKAVLLKTKKKGQKKSGRPKKQRKQK
Formulation:	Liquid. Purified antibody supplied in 1x PBS buffer with 0.09% (w/v) sodium azide and 2% sucrose. <i>Note that this product is shipped as lyophilized powder to China customers.</i>
Purification:	Affinity Purified
Conjugation:	Unconjugated
Storage:	Store at -20°C as received.
Stability:	Stable for 12 months from date of receipt.
Predicted Protein Size:	48 kDa
Gene Name:	RNA binding motif protein 34
Database Link:	NP_055829 Entrez Gene 23029 Human P42696
Background:	RBM34 belongs to the RRM RBM34 family. It contains 2 RRM (RNA recognition motif) domains. The function of the RBM34 protein remains unknown.
Synonyms:	KIAA0117
Note:	Immunogen Sequence Homology: Human: 100%; Dog: 86%; Pig: 86%; Horse: 86%; Rat: 76%



[View online »](#)

Product images:

WB Suggested Anti-RBM34 Antibody Titration: 0.2-1 ug/ml; ELISA Titer: 1: 312500; Positive Control: HeLa cell lysate; There is BioGPS gene expression data showing that RBM34 is expressed in HeLa