

Product datasheet for **TA343822**

EXOSC7 Rabbit Polyclonal Antibody

Product data:

Product Type:	Primary Antibodies
Applications:	IHC, WB
Recommended Dilution:	WB
Reactivity:	Human
Host:	Rabbit
Isotype:	IgG
Clonality:	Polyclonal
Immunogen:	The immunogen for anti-EXOSC7 antibody: synthetic peptide directed towards the N terminal of human EXOSC7. Synthetic peptide located within the following region: EVETDVVSNTSGSARVKLGHTDILVGVKAEMGTPKLEKPNEGYLEFFVDC
Formulation:	Liquid. Purified antibody supplied in 1x PBS buffer with 0.09% (w/v) sodium azide and 2% sucrose. <i>Note that this product is shipped as lyophilized powder to China customers.</i>
Purification:	Affinity Purified
Conjugation:	Unconjugated
Storage:	Store at -20°C as received.
Stability:	Stable for 12 months from date of receipt.
Predicted Protein Size:	32 kDa
Gene Name:	exosome component 7
Database Link:	NP_055819 Entrez Gene 23016 Human Q15024
Background:	EXOSC7 belongs to the RNase PH family. It is a component of the exosome 3'→5' exoribonuclease complex, a complex that degrades inherently unstable mRNAs containing AU-rich elements (AREs) within their 3'-untranslated regions. The protein is required for the 3'-processing of the 7S pre-rRNA to the mature 5.8S rRNA.
Synonyms:	EAP1; hRrp42p; p8; RRP42; Rrp42p



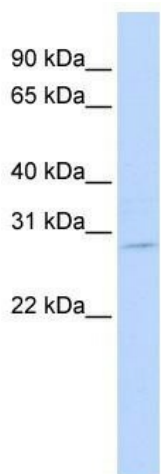
[View online »](#)

Note: Immunogen Sequence Homology: Dog: 100%; Pig: 100%; Horse: 100%; Human: 100%; Mouse: 100%; Bovine: 100%; Rat: 93%; Guinea pig: 93%; Rabbit: 86%

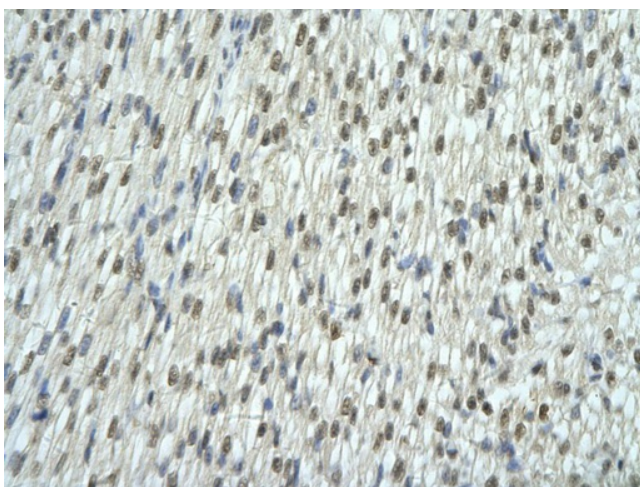
Protein Families: Stem cell - Pluripotency

Protein Pathways: RNA degradation

Product images:



WB Suggested Anti-EXOSC7 Antibody Titration: 0.2-1 ug/ml; ELISA Titer: 1: 312500; Positive Control: MCF7 cell lysate; EXOSC7 is supported by BioGPS gene expression data to be expressed in MCF7



Rabbit Anti-EXOSC7 antibody; Paraffin Embedded Tissue: Human Heart cell Cellular Data: cardiac cell of renal tubule; Antibody Concentration: 4.0-8.0 ug/ml; Magnification: 400X