

Product datasheet for **TA343819**

DIS3 Rabbit Polyclonal Antibody

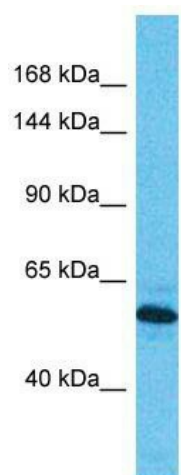
Product data:

Product Type:	Primary Antibodies
Applications:	WB
Recommended Dilution:	WB
Reactivity:	Human
Host:	Rabbit
Isotype:	IgG
Clonality:	Polyclonal
Immunogen:	The immunogen for Anti-DIS3 antibody is: synthetic peptide directed towards the N-terminal region of Human DIS3. Synthetic peptide located within the following region: QTVLQEVNRNSAPVYKRIRDVTNNQEKHFYFTNEHHRETYVEQEQGENA
Formulation:	Liquid. Purified antibody supplied in 1x PBS buffer with 0.09% (w/v) sodium azide and 2% sucrose. <i>Note that this product is shipped as lyophilized powder to China customers.</i>
Purification:	Affinity Purified
Conjugation:	Unconjugated
Storage:	Store at -20°C as received.
Stability:	Stable for 12 months from date of receipt.
Predicted Protein Size:	61 kDa
Gene Name:	DIS3 homolog, exosome endoribonuclease and 3'-5' exoribonuclease
Database Link:	NP_001121698 Entrez Gene 22894 Human Q9Y2L1
Background:	The function of this protein remains unknown.
Synonyms:	2810028N01Rik; dis3p; EXOSC11; KIAA1008; RRP44
Note:	Immunogen Sequence Homology: Dog: 100%; Pig: 100%; Rat: 100%; Horse: 100%; Human: 100%; Bovine: 100%; Rabbit: 100%; Guinea pig: 100%; Goat: 90%; Mouse: 86%; Zebrafish: 79%
Protein Pathways:	RNA degradation



[View online »](#)

Product images:



Host: Rabbit; Target Name: DIS3; Sample Tissue: Esophagus Tumor lysates; Antibody Dilution: 1.0 ug/ml