

Product datasheet for **TA343818**

KIAA0427 (CTIF) Rabbit Polyclonal Antibody

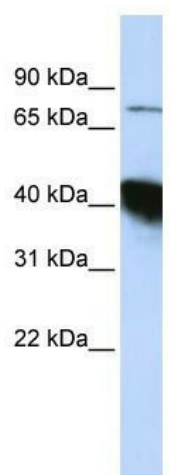
Product data:

Product Type:	Primary Antibodies
Applications:	WB
Recommended Dilution:	WB
Reactivity:	Human
Host:	Rabbit
Isotype:	IgG
Clonality:	Polyclonal
Immunogen:	The immunogen for anti-KIAA0427 antibody: synthetic peptide directed towards the N terminal of human KIAA0427. Synthetic peptide located within the following region: QVQGLLADKTEGDGESERTQSHISQWTADCSEPLDSSCSFSRGRAPPQQN
Formulation:	Liquid. Purified antibody supplied in 1x PBS buffer with 0.09% (w/v) sodium azide and 2% sucrose. <i>Note that this product is shipped as lyophilized powder to China customers.</i>
Purification:	Affinity Purified
Conjugation:	Unconjugated
Storage:	Store at -20°C as received.
Stability:	Stable for 12 months from date of receipt.
Predicted Protein Size:	67 kDa
Gene Name:	CBP80/20-dependent translation initiation factor
Database Link:	NP_055587 Entrez Gene 9811 Human O43310
Background:	The function of KIAA0427 remains unknown.
Synonyms:	Gm672; KIAA0427
Note:	Immunogen Sequence Homology: Human: 100%; Dog: 93%; Pig: 93%; Mouse: 93%; Bovine: 93%; Guinea pig: 79%; Rabbit: 77%



[View online »](#)

Product images:



WB Suggested Anti-KIAA0427 Antibody Titration:
0.2-1 ug/ml; ELISA Titer: 1: 12500; Positive
Control: HepG2 cell lysate