

Product datasheet for **TA343816**

hSET1 (SETD1A) Rabbit Polyclonal Antibody

Product data:

Product Type:	Primary Antibodies
Applications:	WB
Recommended Dilution:	WB
Reactivity:	Human
Host:	Rabbit
Isotype:	IgG
Clonality:	Polyclonal
Immunogen:	The immunogen for Anti-SETD1A antibody is: synthetic peptide directed towards the C-terminal region of Human SETD1A. Synthetic peptide located within the following region: SPADEVLEAPEVVVAEAEKPKPQQLQQREEGEEEGEEEGEEEESSDS
Formulation:	Liquid. Purified antibody supplied in 1x PBS buffer with 0.09% (w/v) sodium azide and 2% sucrose. <i>Note that this product is shipped as lyophilized powder to China customers.</i>
Purification:	Affinity Purified
Conjugation:	Unconjugated
Storage:	Store at -20°C as received.
Stability:	Stable for 12 months from date of receipt.
Predicted Protein Size:	186 kDa
Gene Name:	SET domain containing 1A
Database Link:	NP_055527 Entrez Gene 9739 Human O15047
Background:	SET1A is a component of a histone methyltransferase (HMT) complex that produces mono-, di-, and trimethylated histone H3 at Lys4. The complex is the analog of the <i>S. cerevisiae</i> Set1/COMPASS complex.
Synonyms:	KMT2F; Set1; Set1A
Note:	Immunogen Sequence Homology: Pig: 100%; Rat: 100%; Human: 100%; Guinea pig: 100%; Horse: 83%; Mouse: 82%; Yeast: 82%; Dog: 79%

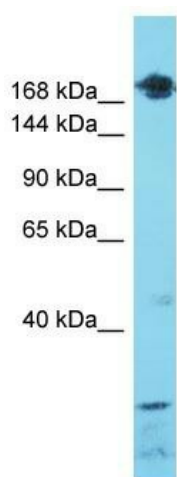


[View online »](#)

Protein Families: Druggable Genome

Protein Pathways: Lysine degradation

Product images:



Host: Rabbit

Target Name: SETD1A

Sample Tissue: Breast Tumor Lysate

Antibody Dilution: 1.0 μ g/ml

Host: Rabbit; Target Name: SETD1A; Sample Tissue: Breast Tumor lysates; Antibody Dilution: 1.0 ug/ml