

Product datasheet for **TA343815**

TMEM63A Rabbit Polyclonal Antibody

Product data:

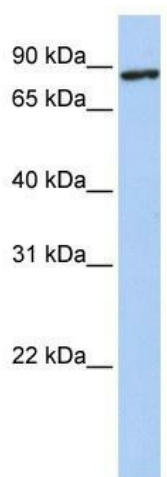
Product Type:	Primary Antibodies
Applications:	WB
Recommended Dilution:	WB
Reactivity:	Human
Host:	Rabbit
Isotype:	IgG
Clonality:	Polyclonal
Immunogen:	The immunogen for anti-TMEM63A antibody: synthetic peptide directed towards the N terminal of human TMEM63A. Synthetic peptide located within the following region: MDSPFLELWQSKAVSIREQLGLGDRPNDSCYNSAKNSTVLQGVTFGGIP
Formulation:	Liquid. Purified antibody supplied in 1x PBS buffer with 0.09% (w/v) sodium azide and 2% sucrose. <i>Note that this product is shipped as lyophilized powder to China customers.</i>
Purification:	Affinity Purified
Conjugation:	Unconjugated
Storage:	Store at -20°C as received.
Stability:	Stable for 12 months from date of receipt.
Predicted Protein Size:	89 kDa
Gene Name:	transmembrane protein 63A
Database Link:	NP_055513 Entrez Gene 9725 Human O94886
Background:	TMEM63A is a multi-pass membrane proteinPotential. It belongs to the SPO75/TMEM63 family. The exact function of TMEM63A remains unknown.
Synonyms:	KIAA0792
Note:	Immunogen Sequence Homology: Human: 100%; Rat: 93%; Pig: 86%; Mouse: 86%; Rabbit: 86%; Guinea pig: 86%; Yeast: 83%



[View online »](#)

Protein Families: Transmembrane

Product images:



WB Suggested Anti-TMEM63A Antibody Titration:
0.2-1 ug/ml; Positive Control: 293T cell lysate