

Product datasheet for **TA343812**

LSM1 Rabbit Polyclonal Antibody

Product data:

Product Type:	Primary Antibodies
Applications:	WB
Recommended Dilution:	WB
Reactivity:	Human
Host:	Rabbit
Isotype:	IgG
Clonality:	Polyclonal
Immunogen:	The immunogen for anti-LSM1 antibody: synthetic peptide directed towards the middle region of human LSM1. Synthetic peptide located within the following region: SDTPLQVSIIEEILEEQRVEQQTKLEAEKLVQALKDRGLSIPRADTLDE
Formulation:	Liquid. Purified antibody supplied in 1x PBS buffer with 0.09% (w/v) sodium azide and 2% sucrose. <i>Note that this product is shipped as lyophilized powder to China customers.</i>
Purification:	Affinity Purified
Conjugation:	Unconjugated
Storage:	Store at -20°C as received.
Stability:	Stable for 12 months from date of receipt.
Predicted Protein Size:	15 kDa
Gene Name:	LSM1 homolog, mRNA degradation associated
Database Link:	NP_055277 Entrez Gene 27257 Human O15116
Background:	Sm-like proteins were identified in a variety of organisms based on sequence homology with the Sm protein family (see SNRPD2; MIM 601061). Sm-like proteins contain the Sm sequence motif, which consists of 2 regions separated by a linker of variable length
Synonyms:	CASM; YJL124C
Note:	Immunogen Sequence Homology: Dog: 100%; Pig: 100%; Rat: 100%; Human: 100%; Mouse: 100%; Rabbit: 100%; Guinea pig: 100%; Horse: 93%; Bovine: 93%; Zebrafish: 79%

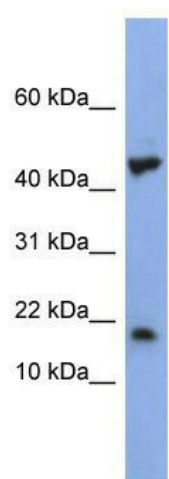


[View online »](#)

Protein Families: Stem cell - Pluripotency

Protein Pathways: RNA degradation

Product images:



WB Suggested Anti-LSM1 Antibody Titration: 0.2-1 ug/ml; ELISA Titer: 1: 312500; Positive Control: NCI-H226 cell lysate