

## Product datasheet for **TA343811**

### CSDC2 Rabbit Polyclonal Antibody

#### Product data:

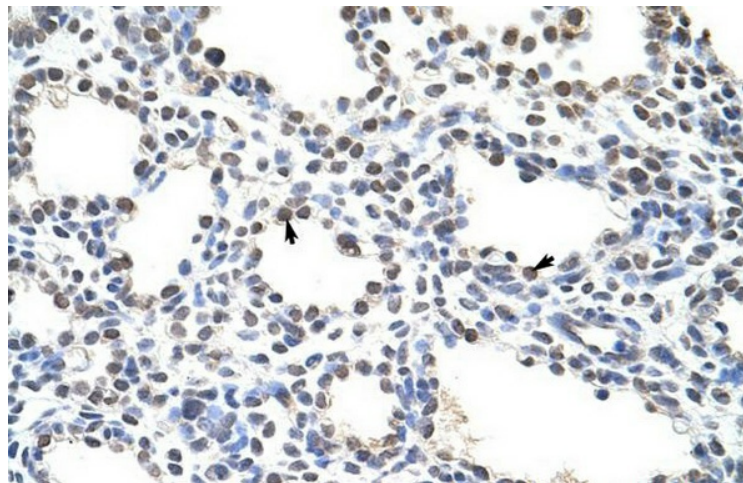
Product Type:	Primary Antibodies
Applications:	IHC
Recommended Dilution:	WB, IHC
Reactivity:	Human
Host:	Rabbit
Isotype:	IgG
Clonality:	Polyclonal
Immunogen:	The immunogen for anti-CSDC2 antibody: synthetic peptide directed towards the N terminal of human CSDC2. Synthetic peptide located within the following region: MTSESTSPVVPPLHSPKSPWPTFPFHREGSRVWERGGVPPRDLPSPLP
Formulation:	Liquid. Purified antibody supplied in 1x PBS buffer with 0.09% (w/v) sodium azide and 2% sucrose. <i>Note that this product is shipped as lyophilized powder to China customers.</i>
Purification:	Protein A purified
Conjugation:	Unconjugated
Storage:	Store at -20°C as received.
Stability:	Stable for 12 months from date of receipt.
Predicted Protein Size:	17 kDa
Gene Name:	cold shock domain containing C2
Database Link:	<a href="#">NP_055275</a> <a href="#">Entrez Gene 27254 Human</a> <a href="#">Q9Y534</a>
Background:	CSDC2 is an RNA-binding factor which binds specifically to the very 3' UTR ends of both histone H1 and H3.3 mRNAs, encompassing the polyadenylation signal. It might play a central role in the negative regulation of histone variant synthesis in the developing brain.
Synonyms:	dj347H13.2; PIPPIN
Note:	Immunogen Sequence Homology: Rat: 100%; Human: 100%; Pig: 93%; Horse: 93%; Mouse: 93%; Rabbit: 93%; Guinea pig: 93%; Dog: 86%; Bovine: 79%



[View online »](#)

Protein Families: Transcription Factors

### Product images:



Rabbit Anti-CSDC2 Antibody; Paraffin Embedded Tissue: Human Lung; Cellular Data: Alveolar cells; Antibody Concentration: 4.0-8.0 ug/ml; Magnification: 400X