

## Product datasheet for **TA343810**

### STAU2 Rabbit Polyclonal Antibody

#### Product data:

Product Type:	Primary Antibodies
Applications:	WB
Recommended Dilution:	WB
Reactivity:	Human
Host:	Rabbit
Isotype:	IgG
Clonality:	Polyclonal
Immunogen:	The immunogen for Anti-STAU2 antibody is: synthetic peptide directed towards the C-terminal region of Human STAU2. Synthetic peptide located within the following region: STNLQDQLEKTGENKGWSGPKPGFPEPTNNTPKGILHLSPDVYQEMEASR
Formulation:	Liquid. Purified antibody supplied in 1x PBS buffer with 0.09% (w/v) sodium azide and 2% sucrose. <i>Note that this product is shipped as lyophilized powder to China customers.</i>
Purification:	Affinity Purified
Conjugation:	Unconjugated
Storage:	Store at -20°C as received.
Stability:	Stable for 12 months from date of receipt.
Predicted Protein Size:	43 kDa
Gene Name:	staufen double-stranded RNA binding protein 2
Database Link:	<a href="#">NP_001157852</a> <a href="#">Entrez Gene 27067 Human</a> <a href="#">Q9NUL3</a>



[View online »](#)

**Background:**

Staufen homolog 2 is a member of the family of double-stranded RNA (dsRNA)-binding proteins involved in the transport and/or localization of mRNAs to different subcellular compartments and/or organelles. These proteins are characterized by the presence of multiple dsRNA-binding domains which are required to bind RNAs having double-stranded secondary structures. Staufen homolog 2 shares 48.5% and 59.9% similarity with drosophila and human staufen, respectively. The exact function of Staufen homolog 2 is not known, but since it contains 3 copies of conserved dsRNA binding domain, it could be involved in double-stranded RNA binding events. Several transcript variants encoding different isoforms have been found for this gene.

**Synonyms:**

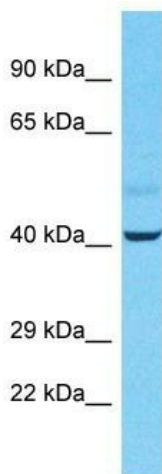
39K2; 39K3

**Note:**

Immunogen Sequence Homology: Human: 100%; Mouse: 100%; Dog: 93%; Pig: 93%; Rat: 93%; Bovine: 93%; Horse: 86%; Rabbit: 86%; Guinea pig: 86%

**Protein Families:**

Transcription Factors

**Product images:**

Host: Rabbit

Target Name: STAU2

Sample Tissue: Lymph Tumor Lysate

Antibody Dilution: 1.0 µg/ml

Host: Rabbit; Target Name: STAU2; Sample Tissue: Lymph Tumor lysates; Antibody Dilution: 1.0 ug/ml