

## Product datasheet for **TA343807**

### RRP4 (EXOSC2) Rabbit Polyclonal Antibody

#### Product data:

Product Type:	Primary Antibodies
Applications:	IHC, WB
Recommended Dilution:	WB
Reactivity:	Human
Host:	Rabbit
Isotype:	IgG
Clonality:	Polyclonal
Immunogen:	The immunogen for anti-EXOSC2 antibody: synthetic peptide directed towards the N terminal of human EXOSC2. Synthetic peptide located within the following region: RKPLSERLGRDTKKHLVPGDTITTDGFMRGHGTYMGEKLIASVAGSV
Formulation:	Liquid. Purified antibody supplied in 1x PBS buffer with 0.09% (w/v) sodium azide and 2% sucrose.
Purification:	Protein A purified
Conjugation:	Unconjugated
Storage:	Store at -20°C as received.
Stability:	Stable for 12 months from date of receipt.
Predicted Protein Size:	32 kDa
Gene Name:	exosome component 2
Database Link:	<a href="#">NP_055100</a> <a href="#">Entrez Gene 23404 Human</a> <a href="#">Q13868</a>
Background:	EXOSC2 belongs to the exosome, a RNA-processing complex, which is at least involved in the 3' processing of the 7S pre-rRNA to the mature 5.8S rRNA. It exhibits a 3'-5' exoribonuclease activity.
Synonyms:	hRrp4p; p7; RRP4; Rrp4p
Note:	Immunogen Sequence Homology: Human: 100%; Rat: 93%; Rabbit: 91%; Dog: 86%; Pig: 86%; Mouse: 86%; Guinea pig: 85%; Horse: 79%; Bovine: 79%



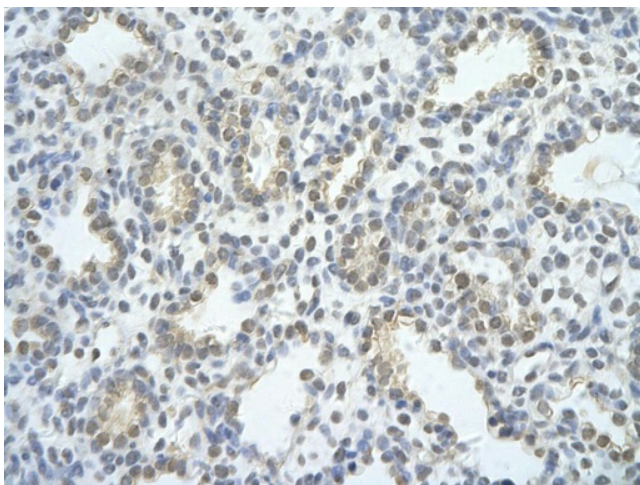
[View online »](#)

Protein Pathways: RNA degradation

### Product images:



WB Suggested Anti-EXOSC2 Antibody Titration: 1.25 ug/ml; ELISA Titer: 1: 1562500; Positive Control: Jurkat cell lysate EXOSC2 is strongly supported by BioGPS gene expression data to be expressed in Human Jurkat cells



Rabbit Anti-EXOSC2 antibody; Paraffin Embedded Tissue: Human Lung cell Cellular Data: alveolar cell of renal tubule; Antibody Concentration: 4.0-8.0 ug/ml; Magnification: 400X