

## Product datasheet for **TA343806**

### RRP4 (EXOSC2) Rabbit Polyclonal Antibody

#### Product data:

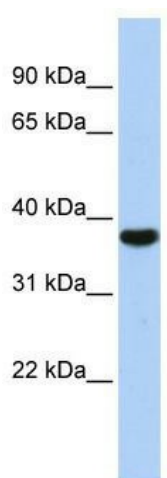
Product Type:	Primary Antibodies
Applications:	WB
Recommended Dilution:	WB
Reactivity:	Human
Host:	Rabbit
Isotype:	IgG
Clonality:	Polyclonal
Immunogen:	The immunogen for anti-EXOSC2 antibody: synthetic peptide directed towards the middle region of human EXOSC2. Synthetic peptide located within the following region: AEVQAVFSDGAVSLHTRSLKYGKLGQGVLVQVSPSLVKRQKTHFDLPCG
Formulation:	Liquid. Purified antibody supplied in 1x PBS buffer with 0.09% (w/v) sodium azide and 2% sucrose. <i>Note that this product is shipped as lyophilized powder to China customers.</i>
Purification:	Affinity Purified
Conjugation:	Unconjugated
Storage:	Store at -20°C as received.
Stability:	Stable for 12 months from date of receipt.
Predicted Protein Size:	32 kDa
Gene Name:	exosome component 2
Database Link:	<a href="#">NP_055100</a> <a href="#">Entrez Gene 23404 Human Q13868</a>
Background:	EXOSC2 belongs to the exosome, a RNA-processing complex, which is at least involved in the 3' processing of the 7S pre-rRNA to the mature 5.8S rRNA. It exhibits a 3'-5' exoribonuclease activity.
Synonyms:	hRrp4p; p7; RRP4; Rrp4p
Note:	Immunogen Sequence Homology: Dog: 100%; Pig: 100%; Rat: 100%; Horse: 100%; Human: 100%; Mouse: 100%; Bovine: 100%; Rabbit: 100%; Guinea pig: 100%; Zebrafish: 93%



[View online »](#)

Protein Pathways: RNA degradation

### Product images:



WB Suggested Anti-EXOSC2 Antibody Titration:  
0.2-1 ug/ml; ELISA Titer: 1: 62500; Positive  
Control: HepG2 cell lysate