

Product datasheet for **TA343802**

SRP68 Rabbit Polyclonal Antibody

Product data:

Product Type:	Primary Antibodies
Applications:	WB
Recommended Dilution:	WB
Reactivity:	Human
Host:	Rabbit
Isotype:	IgG
Clonality:	Polyclonal
Immunogen:	The immunogen for anti-SRP68 antibody: synthetic peptide directed towards the N terminal of human SRP68. Synthetic peptide located within the following region: EENKENERPSAGSKANKEFGDLSLEILQIIKESQQQHGLRHGDFQRYRG
Formulation:	Liquid. Purified antibody supplied in 1x PBS buffer with 0.09% (w/v) sodium azide and 2% sucrose. <i>Note that this product is shipped as lyophilized powder to China customers.</i>
Purification:	Affinity Purified
Conjugation:	Unconjugated
Storage:	Store at -20°C as received.
Stability:	Stable for 12 months from date of receipt.
Predicted Protein Size:	71 kDa
Gene Name:	signal recognition particle 68
Database Link:	NP_055045 Entrez Gene 6730 Human Q9UHB9



[View online »](#)

Background:

The signal recognition particle (SRP) is a ribonucleoprotein complex that transports secreted and membrane proteins to the endoplasmic reticulum for processing. The complex includes a 7S RNA and six protein subunits. SRP68 is the 68kDa component of the SRP. The signal recognition particle (SRP) is a ribonucleoprotein complex that transports secreted and membrane proteins to the endoplasmic reticulum for processing. The complex includes a 7S RNA and six protein subunits. This gene encodes the 68kDa component of the SRP. Alternatively spliced transcript variants have been identified, but their biological validity has not been determined. Three related pseudogenes are located within the Smith-Magenis syndrome region on chromosome 17.

Synonyms:

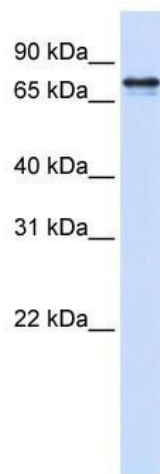
signal recognition particle 68kDa

Note:

Immunogen Sequence Homology: Dog: 100%; Pig: 100%; Rat: 100%; Horse: 100%; Human: 100%; Mouse: 100%; Bovine: 100%; Rabbit: 100%; Guinea pig: 93%; Zebrafish: 86%; Goat: 77%

Protein Pathways:

Protein export

Product images:

WB Suggested Anti-SRP68 Antibody Titration: 0.2-1 ug/ml; ELISA Titer: 1: 312500; Positive Control: 293T cell lysate