

Product datasheet for **TA343800**

FAM156A Rabbit Polyclonal Antibody

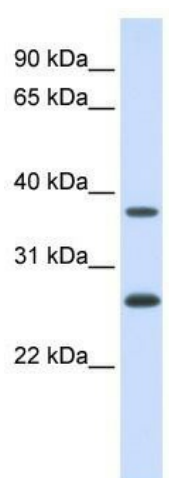
Product data:

Product Type:	Primary Antibodies
Applications:	WB
Recommended Dilution:	WB
Reactivity:	Human
Host:	Rabbit
Isotype:	IgG
Clonality:	Polyclonal
Immunogen:	The immunogen for anti-FAM156A antibody: synthetic peptide directed towards the N terminal of human FAM156A. Synthetic peptide located within the following region: DPLQKRNPASPSKSSPMTAAETSQEGPAPSQPSYSEQPMGLSNLSPGPG
Formulation:	Liquid. Purified antibody supplied in 1x PBS buffer with 0.09% (w/v) sodium azide and 2% sucrose. <i>Note that this product is shipped as lyophilized powder to China customers.</i>
Purification:	Affinity Purified
Conjugation:	Unconjugated
Storage:	Store at -20°C as received.
Stability:	Stable for 12 months from date of receipt.
Predicted Protein Size:	24 kDa
Gene Name:	family with sequence similarity 156 member A
Database Link:	NP_054857 Entrez Gene 29057 Human Q8NDB6
Background:	The exact function of FAM156A remains unknown.
Synonyms:	PRO0659; TMEM29
Note:	Immunogen Sequence Homology: Human: 100%



[View online »](#)

Product images:



WB Suggested Anti-FAM156A Antibody Titration:
0.2-1 ug/ml; ELISA Titer: 1: 312500; Positive
Control: Human Lung