

## Product datasheet for **TA343798**

### **NIPP1 (PPP1R8) Rabbit Polyclonal Antibody**

#### **Product data:**

<b>Product Type:</b>	Primary Antibodies
<b>Applications:</b>	IHC, WB
<b>Recommended Dilution:</b>	WB
<b>Reactivity:</b>	Human
<b>Host:</b>	Rabbit
<b>Isotype:</b>	IgG
<b>Clonality:</b>	Polyclonal
<b>Immunogen:</b>	The immunogen for anti-PPP1R8 antibody: synthetic peptide directed towards the N terminal of human PPP1R8. Synthetic peptide located within the following region: THGTFGLGHIRLEPHKPPQQIPIDSTVSFGASTRAYTLREKPQTLPSAVKGD
<b>Formulation:</b>	Liquid. Purified antibody supplied in 1x PBS buffer with 0.09% (w/v) sodium azide and 2% sucrose. <i>Note that this product is shipped as lyophilized powder to China customers.</i>
<b>Purification:</b>	Affinity Purified
<b>Conjugation:</b>	Unconjugated
<b>Storage:</b>	Store at -20°C as received.
<b>Stability:</b>	Stable for 12 months from date of receipt.
<b>Predicted Protein Size:</b>	39 kDa
<b>Gene Name:</b>	protein phosphatase 1 regulatory subunit 8
<b>Database Link:</b>	<a href="#">NP_054829</a> <a href="#">Entrez Gene 5511 Human</a> <a href="#">Q12972</a>
<b>Background:</b>	This gene, through alternative splicing, encodes three different isoforms. Two of the protein isoforms encoded by this gene are specific inhibitors of type 1 serine/threonine protein phosphatases and can bind but not cleave RNA. The third protein isoform lacks the phosphatase inhibitory function but is a single-strand endoribonuclease comparable to RNase E of E. coli. This isoform requires magnesium for its function and cleaves specific sites in A+U-rich regions of RNA.



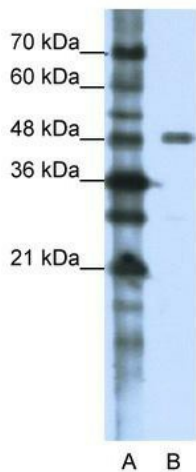
[View online »](#)

**Synonyms:** ARD-1; ARD1; NIPP-1; NIPP1; PRO2047

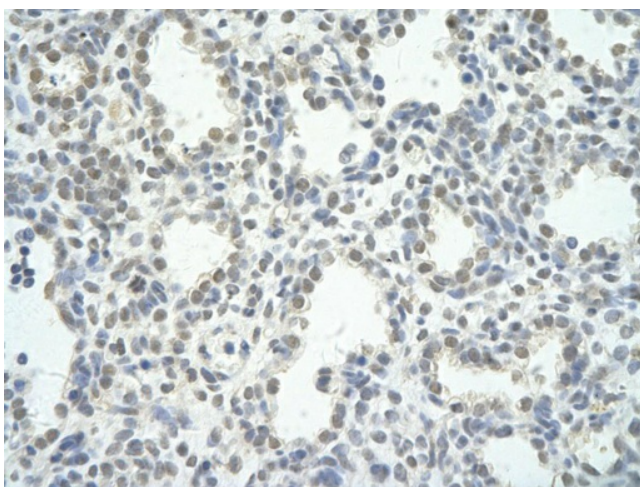
**Note:** Immunogen Sequence Homology: Dog: 100%; Pig: 100%; Rat: 100%; Horse: 100%; Human: 100%; Mouse: 100%; Bovine: 100%; Rabbit: 100%; Guinea pig: 100%; Zebrafish: 93%

**Protein Families:** Druggable Genome, Transcription Factors

**Product images:**



WB Suggested Anti-PPP1R8 Antibody Titration: 1.25 ug/ml; ELISA Titer: 1: 312500; Positive Control: HepG2 cell lysate PPP1R8 is supported by BioGPS gene expression data to be expressed in HepG2



Rabbit Anti-PPP1R8 antibody; Paraffin Embedded Tissue: Human Lung cell Cellular Data: alveolar cell of renal tubule; Antibody Concentration: 4.0-8.0 ug/ml; Magnification: 400X