

Product datasheet for **TA343795**

EWSR1 Rabbit Polyclonal Antibody

Product data:

Product Type:	Primary Antibodies
Applications:	IHC, WB
Recommended Dilution:	WB
Reactivity:	Human
Host:	Rabbit
Isotype:	IgG
Clonality:	Polyclonal
Immunogen:	The immunogen for anti-EWSR1 antibody: synthetic peptide directed towards the middle region of human EWSR1. Synthetic peptide located within the following region: QPSSYGQQSSYGQQSSYGQQPPTSYPPTGSSYSQAPSQYSQQSSSYGQQS
Formulation:	Liquid. Purified antibody supplied in 1x PBS buffer with 0.09% (w/v) sodium azide and 2% sucrose. <i>Note that this product is shipped as lyophilized powder to China customers.</i>
Purification:	Affinity Purified
Conjugation:	Unconjugated
Storage:	Store at -20°C as received.
Stability:	Stable for 12 months from date of receipt.
Predicted Protein Size:	68 kDa
Gene Name:	EWS RNA binding protein 1
Database Link:	NP_005234 Entrez Gene 2130 Human Q01844
Background:	EWSR1 is a putative RNA binding protein. Mutations in this gene, specifically a t(11;22) (q24;q12) translocation, are known to cause Ewing sarcoma as well as neuroectodermal and various other tumors. Alternative splicing of this gene results in two products. This gene encodes a putative RNA binding protein. Mutations in this gene, specifically a t(11;22) (q24;q12) translocation, are known to cause Ewing sarcoma as well as neuroectodermal and various other tumors. Alternative splicing of this gene results in two products.



[View online »](#)

Synonyms: bK984G1.4; EWS; EWS-FLI1

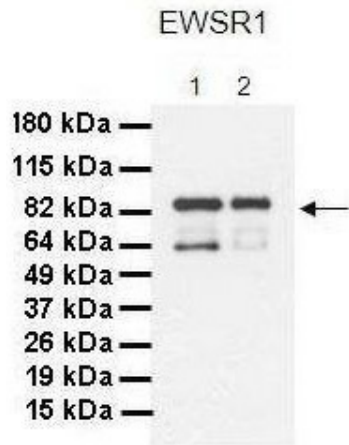
Note: Immunogen Sequence Homology: Dog: 100%; Pig: 100%; Rat: 100%; Horse: 100%; Human: 100%; Mouse: 100%; Bovine: 100%; Rabbit: 100%; Guinea pig: 100%

Protein Families: Druggable Genome, Stem cell - Pluripotency, Transcription Factors

Product images:

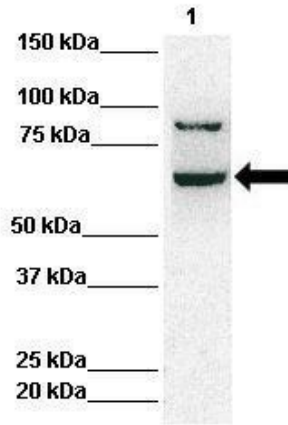


WB Suggested Anti-EWSR1 Antibody Titration: 0.2-1 ug/ml; ELISA Titer: 1: 312500; Positive Control: HepG2 cell lysate

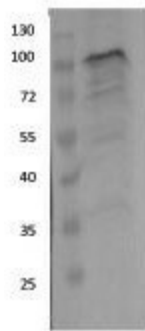


Lanes: 1. 30 ug MiaPaca-2 cell lysate; 2. 30 ug Panc-1 cell lysate; Primary Antibody Dilution: 1: 1000; Secondary Antibody: Goat anti-Rabbit HRP; Secondary Antibody Dilution: 1: 4000; Gene Name: EWSR1; Submitted by: Dr. Crissy Dudgeon, Ph.D., CINJ;

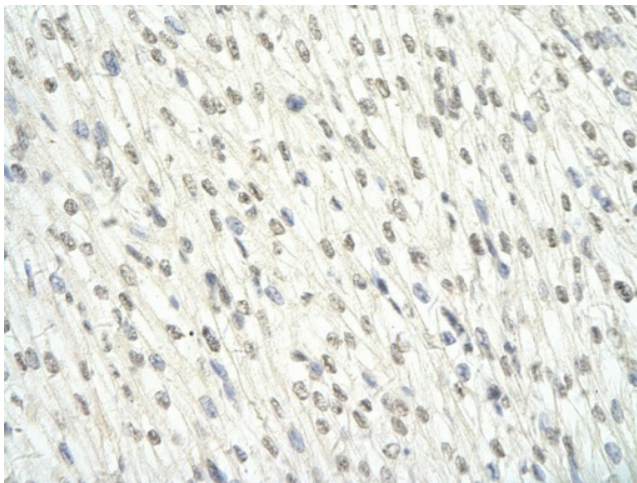
EWSR1



Lanes: Lane 1: 50ug HeLa Lysate; Primary Antibody Dilution: 1: 1000; Secondary Antibody: Anti-rabbit-HRP; Secondary Antibody Dilution: 1: 10, 000; Gene Name: EWSR1; Submitted by: Archa Fox, University of Western Australia; EWSR1 is strongly supported by B



Sample Type: HEK cells transfected with pFLAG EWSR1-ATF1 Primary Dilution: 1: 1000 EWSR1 is supported by BioGPS gene expression data to be expressed in HEK293



Rabbit Anti-EWSR1 antibody; Paraffin Embedded Tissue: Human Heart cell Cellular Data: cardiac cell of renal tubule; Antibody Concentration: 4.0-8.0 ug/ml; Magnification: 400X