

## Product datasheet for **TA343791**

### CPSF1 Rabbit Polyclonal Antibody

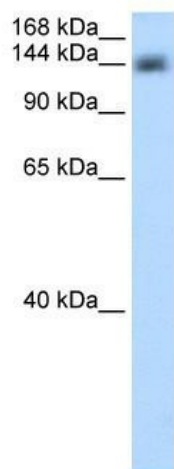
#### Product data:

Product Type:	Primary Antibodies
Applications:	WB
Recommended Dilution:	WB
Reactivity:	Human
Host:	Rabbit
Isotype:	IgG
Clonality:	Polyclonal
Immunogen:	The immunogen for anti-CPSF1 antibody: synthetic peptide directed towards the middle region of human CPSF1. Synthetic peptide located within the following region: GCYDMWTVIAPVRKEEEDNPKGEGTEQEPSTTPEADDDGRRHGFLILSRE
Formulation:	Liquid. Purified antibody supplied in 1x PBS buffer with 0.09% (w/v) sodium azide and 2% sucrose. <i>Note that this product is shipped as lyophilized powder to China customers.</i>
Purification:	Affinity Purified
Conjugation:	Unconjugated
Storage:	Store at -20°C as received.
Stability:	Stable for 12 months from date of receipt.
Predicted Protein Size:	161 kDa
Gene Name:	cleavage and polyadenylation specific factor 1
Database Link:	<a href="#">NP_037423</a> <a href="#">Entrez Gene 29894 Human Q10570</a>
Background:	CPSF1 is a component of the cleavage and polyadenylation specificity factor (CPSF) complex that plays a key role in pre-mRNA 3'-end formation, recognizing the AAUAAA signal sequence and interacting with poly(A) polymerase and other factors to bring about cleavage and poly(A) addition. This subunit is involved in the RNA recognition step of the polyadenylation reaction.
Synonyms:	cl.18; CPSF160; HSU37012; P
Note:	Immunogen Sequence Homology: Human: 100%; Horse: 79%; Rat: 77%



[View online »](#)

## Product images:



WB Suggested Anti-CPSF1 Antibody Titration: 0.2-1 ug/ml; ELISA Titer: 1: 62500; Positive Control: Transfected 293T