

Product datasheet for **TA343788**

ANT 1 (PRPF6) Rabbit Polyclonal Antibody

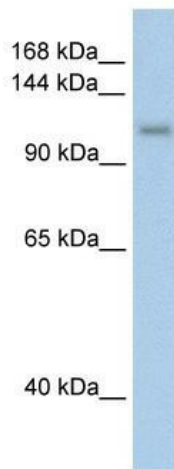
Product data:

Product Type:	Primary Antibodies
Applications:	WB
Recommended Dilution:	WB
Reactivity:	Human
Host:	Rabbit
Isotype:	IgG
Clonality:	Polyclonal
Immunogen:	The immunogen for anti-PRPF6 antibody: synthetic peptide directed towards the C terminal of human PRPF6. Synthetic peptide located within the following region: FWSQRKITKAREWFHRTVKIDSDLGDAWAFFYKFELQHGTEEQEEVRKR
Formulation:	Liquid. Purified antibody supplied in 1x PBS buffer with 0.09% (w/v) sodium azide and 2% sucrose. <i>Note that this product is shipped as lyophilized powder to China customers.</i>
Purification:	Protein A purified
Conjugation:	Unconjugated
Storage:	Store at -20°C as received.
Stability:	Stable for 12 months from date of receipt.
Predicted Protein Size:	104 kDa
Gene Name:	pre-mRNA processing factor 6
Database Link:	NP_036601 Entrez Gene 24148 Human O94906



[View online »](#)

- Background:** PRPF6 appears to be involved in pre-mRNA splicing, possibly acting as a bridging factor between U5 and U4/U6 snRNPs in formation of the spliceosome. PRPF6 also can bind androgen receptor, providing a link between transcriptional activation and splicing. The protein encoded by this gene appears to be involved in pre-mRNA splicing, possibly acting as a bridging factor between U5 and U4/U6 snRNPs in formation of the spliceosome. The encoded protein also can bind androgen receptor, providing a link between transcriptional activation and splicing.
- Synonyms:** ANT-1; ANT1; C20orf14; hPrp6; Prp6; RP60; SNRNP102; TOM; U5-102K
- Note:** Immunogen Sequence Homology: Pig: 100%; Rat: 100%; Human: 100%; Mouse: 100%; Guinea pig: 100%; Rabbit: 93%; Dog: 86%; Horse: 86%; Bovine: 86%; Zebrafish: 86%
- Protein Families:** Druggable Genome
- Protein Pathways:** Spliceosome
- Product images:**



WB Suggested Anti-PRPF6 Antibody Titration: 2.5 ug/ml; ELISA Titer: 1: 62500; Positive Control: Transfected 293T