

Product datasheet for **TA343783**

LSM4 Rabbit Polyclonal Antibody

Product data:

Product Type:	Primary Antibodies
Applications:	IHC, WB
Recommended Dilution:	WB
Reactivity:	Human
Host:	Rabbit
Isotype:	IgG
Clonality:	Polyclonal
Immunogen:	The immunogen for anti-LSM4 antibody: synthetic peptide directed towards the middle region of human LSM4. Synthetic peptide located within the following region: GRGGLQQKQKGRGMGGAGRGVFGGRGRGGIPGTGRGQPEKKPGRQAGK
Formulation:	Liquid. Purified antibody supplied in 1x PBS buffer with 0.09% (w/v) sodium azide and 2% sucrose. <i>Note that this product is shipped as lyophilized powder to China customers.</i>
Purification:	Affinity Purified
Conjugation:	Unconjugated
Storage:	Store at -20°C as received.
Stability:	Stable for 12 months from date of receipt.
Predicted Protein Size:	15 kDa
Gene Name:	LSM4 homolog, U6 small nuclear RNA and mRNA degradation associated
Database Link:	NP_036453 Entrez Gene 25804 Human Q9Y4Z0



[View online »](#)

Background:

Sm-like proteins were identified in a variety of organisms based on sequence homology with the Sm protein family (see SNRPD2; MIM 601061). Sm-like proteins contain the Sm sequence motif, which consists of 2 regions separated by a linker of variable length that folds as a loop. The Sm-like proteins are thought to form a stable heteromer present in tri-snRNP particles, which are important for pre-mRNA splicing. Sm-like proteins were identified in a variety of organisms based on sequence homology with the Sm protein family (see SNRPD2; MIM 601061). Sm-like proteins contain the Sm sequence motif, which consists of 2 regions separated by a linker of variable length that folds as a loop. The Sm-like proteins are thought to form a stable heteromer present in tri-snRNP particles, which are important for pre-mRNA splicing. [supplied by OMIM]. Publication Note: This RefSeq record includes a subset of the publications that are available for this gene. Please see the Entrez Gene record to access additional publications.

Synonyms:

GRP; YER112W

Note:

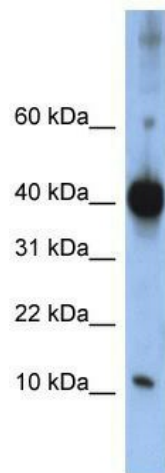
Immunogen Sequence Homology: Dog: 100%; Pig: 100%; Horse: 100%; Human: 100%; Bovine: 100%; Guinea pig: 100%; Rat: 93%; Mouse: 93%

Protein Families:

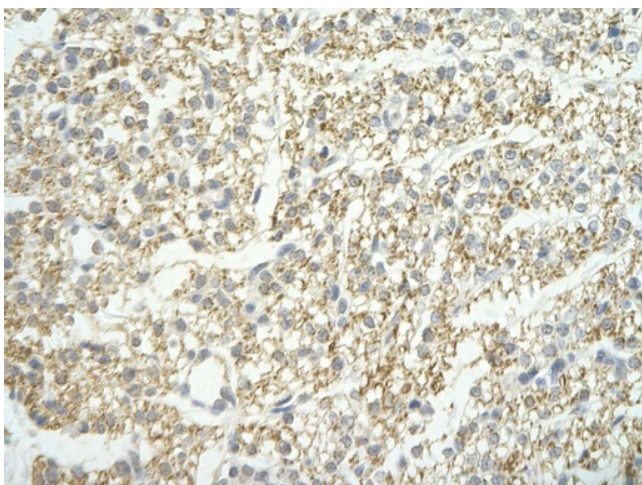
Stem cell - Pluripotency

Protein Pathways:

RNA degradation, Spliceosome

Product images:

WB Suggested Anti-LSM4 Antibody Titration: 0.2-1 ug/ml; ELISA Titer: 1: 1562500; Positive Control: Jurkat cell lysate LSM4 is strongly supported by BioGPS gene expression data to be expressed in Human Jurkat cells



Rabbit Anti-LSM4 antibody; Paraffin Embedded Tissue: Human Heart cell Cellular Data: cardiac cell of renal tubule; Antibody Concentration: 4.0-8.0 ug/ml; Magnification: 400X