

Product datasheet for **TA343781**

ADAT1 Rabbit Polyclonal Antibody

Product data:

Product Type:	Primary Antibodies
Applications:	IHC, WB
Recommended Dilution:	WB, IHC
Reactivity:	Human
Host:	Rabbit
Isotype:	IgG
Clonality:	Polyclonal
Immunogen:	The immunogen for anti-ADAT1 antibody: synthetic peptide directed towards the C terminal of human ADAT1. Synthetic peptide located within the following region: LFRSFQKLLSRIARDKWP HSLRVQKLDTYQEYKEAASSYQEAWSTLRKQV
Formulation:	Liquid. Purified antibody supplied in 1x PBS buffer with 0.09% (w/v) sodium azide and 2% sucrose. <i>Note that this product is shipped as lyophilized powder to China customers.</i>
Purification:	Affinity Purified
Conjugation:	Unconjugated
Storage:	Store at -20°C as received.
Stability:	Stable for 12 months from date of receipt.
Predicted Protein Size:	55 kDa
Gene Name:	adenosine deaminase, tRNA specific 1
Database Link:	NP_036223 Entrez Gene 23536 Human Q9BUB4



[View online »](#)

Background:

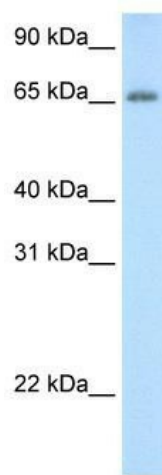
ADAT1 is a member of the ADAR (adenosine deaminase acting on RNA) family. Using site-specific adenosine modification, the family participates in the pre-mRNA editing of nuclear transcripts. ADAT1, tRNA-specific adenosine deaminase 1, is responsible for the deamination of adenosine 37 to inosine in eukaryotic tRNA. This gene is a member of the ADAR (adenosine deaminase acting on RNA) family. Using site-specific adenosine modification, proteins encoded by these genes participate in the pre-mRNA editing of nuclear transcripts. The protein encoded by this gene, tRNA-specific adenosine deaminase 1, is responsible for the deamination of adenosine 37 to inosine in eukaryotic tRNA.

Synonyms:

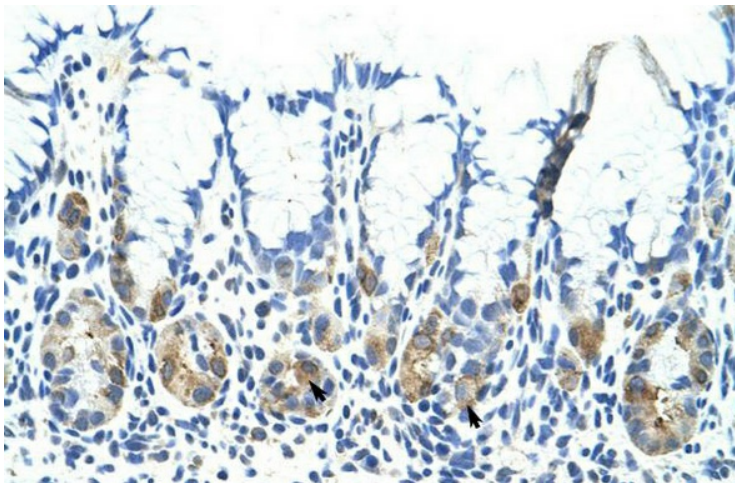
HADAT1

Note:

Immunogen Sequence Homology: Human: 100%; Rat: 93%; Horse: 86%; Mouse: 86%; Pig: 85%; Guinea pig: 85%; Dog: 79%

Product images:

WB Suggested Anti-ADAT1 Antibody Titration: 0.2-1 ug/ml; ELISA Titer: 1: 312500; Positive Control: Human Thymus



Rabbit Anti-ADAT1 Antibody; Paraffin Embedded Tissue: Human Stomach; Cellular Data: Epithelial cells of fundic gland; Antibody Concentration: 4.0-8.0 ug/ml; Magnification: 400X