

Product datasheet for **TA343774**

LSM6 Rabbit Polyclonal Antibody

Product data:

Product Type:	Primary Antibodies
Applications:	WB
Recommended Dilution:	WB
Reactivity:	Human
Host:	Rabbit
Isotype:	IgG
Clonality:	Polyclonal
Immunogen:	The immunogen for anti-LSM6 antibody: synthetic peptide directed towards the N terminal of human LSM6. Synthetic peptide located within the following region: MSLRKQTPSDFLKQIIGRPVWVKLNSGVDYRGVLAACLDGYMNIALEQTEE
Formulation:	Liquid. Purified antibody supplied in 1x PBS buffer with 0.09% (w/v) sodium azide and 2% sucrose. <i>Note that this product is shipped as lyophilized powder to China customers.</i>
Purification:	Affinity Purified
Conjugation:	Unconjugated
Storage:	Store at -20°C as received.
Stability:	Stable for 12 months from date of receipt.
Predicted Protein Size:	9 kDa
Gene Name:	LSM6 homolog, U6 small nuclear RNA and mRNA degradation associated
Database Link:	NP_009011 Entrez Gene 11157 Human P62312



[View online »](#)

Background:

Sm-like proteins were identified in a variety of organisms based on sequence homology with the Sm protein family (see SNRPD2; MIM 601061). Sm-like proteins contain the Sm sequence motif, which consists of 2 regions separated by a linker of variable length that folds as a loop. The Sm-like proteins are thought to form a stable heteromer present in tri-snRNP particles, which are important for pre-mRNA splicing. Sm-like proteins were identified in a variety of organisms based on sequence homology with the Sm protein family (see SNRPD2; MIM 601061). Sm-like proteins contain the Sm sequence motif, which consists of 2 regions separated by a linker of variable length that folds as a loop. The Sm-like proteins are thought to form a stable heteromer present in tri-snRNP particles, which are important for pre-mRNA splicing. [supplied by OMIM]

Synonyms:

YDR378C

Note:

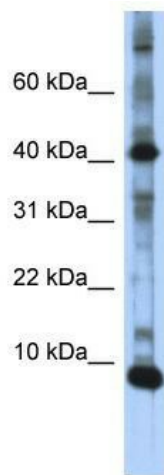
Immunogen Sequence Homology: Dog: 100%; Pig: 100%; Rat: 100%; Horse: 100%; Human: 100%; Mouse: 100%; Bovine: 100%; Rabbit: 100%; Zebrafish: 100%; Guinea pig: 100%

Protein Families:

Stem cell - Pluripotency

Protein Pathways:

RNA degradation, Spliceosome

Product images:

WB Suggested Anti-LSM6 Antibody Titration: 0.2-1 ug/ml; ELISA Titer: 1: 312500; Positive Control: Transfected 293T