

Product datasheet for **TA343767**

HIC2 Rabbit Polyclonal Antibody

Product data:

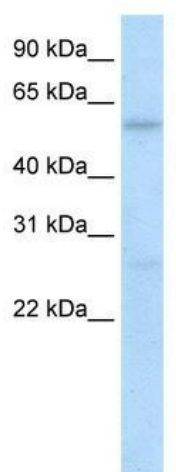
Product Type:	Primary Antibodies
Applications:	WB
Recommended Dilution:	WB
Reactivity:	Human
Host:	Rabbit
Isotype:	IgG
Clonality:	Polyclonal
Immunogen:	The immunogen for anti-HIC2 antibody: synthetic peptide directed towards the N terminal of human HIC2. Synthetic peptide located within the following region: MMSGPLALRWCAWAGRGDMGPDMELPESHKQLLLQLNQRTKGFCDVII
Formulation:	Liquid. Purified antibody supplied in 1x PBS buffer with 0.09% (w/v) sodium azide and 2% sucrose. <i>Note that this product is shipped as lyophilized powder to China customers.</i>
Purification:	Affinity Purified
Conjugation:	Unconjugated
Storage:	Store at -20°C as received.
Stability:	Stable for 12 months from date of receipt.
Predicted Protein Size:	66 kDa
Gene Name:	hypermethylated in cancer 2
Database Link:	NP_055909 Entrez Gene 23119 Human Q96JB3
Background:	Hlon Channel2 contains 5 C2H2-type zinc fingers and 1 BTB (POZ) domain. It belongs to the krueppel C2H2-type zinc-finger protein family, Hic subfamily and is a transcriptional repressor.
Synonyms:	HRG22; ZBTB30; ZNF907
Note:	Immunogen Sequence Homology: Dog: 100%; Pig: 100%; Rat: 100%; Horse: 100%; Human: 100%; Mouse: 100%; Bovine: 100%; Rabbit: 100%; Guinea pig: 100%



[View online »](#)

Protein Families: Transcription Factors

Product images:



WB Suggested Anti-HIC2 Antibody Titration: 0.2-1 ug/ml; ELISA Titer: 1: 312500; Positive Control: Human Placenta