

## Product datasheet for **TA343766**

### ZNF423 Rabbit Polyclonal Antibody

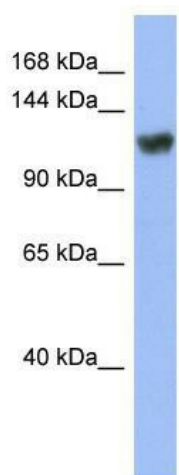
#### Product data:

Product Type:	Primary Antibodies
Applications:	WB
Recommended Dilution:	WB
Reactivity:	Human
Host:	Rabbit
Isotype:	IgG
Clonality:	Polyclonal
Immunogen:	The immunogen for anti-ZNF423 antibody: synthetic peptide directed towards the middle region of human ZNF423. Synthetic peptide located within the following region: CFTVFVQANKLQQHIFAVHGGQEDKIYDCSQCPQKFFFQTELQNHMTMSQHA
Formulation:	Liquid. Purified antibody supplied in 1x PBS buffer with 0.09% (w/v) sodium azide and 2% sucrose.
Purification:	Affinity Purified
Conjugation:	Unconjugated
Storage:	Store at -20°C as received.
Stability:	Stable for 12 months from date of receipt.
Predicted Protein Size:	144 kDa
Gene Name:	zinc finger protein 423
Database Link:	<a href="#">NP_055884</a> <a href="#">Entrez Gene 23090 Human</a> <a href="#">Q2M1K9</a>
Background:	ZNF423 is the transcription factor that can both act as an activator or a repressor depending on the context. ZNF423 plays a central role in BMP signaling and olfactory neurogenesis. ZNF423 is associated with SMADs in response to BMP2 leading to activate
Synonyms:	Ebfaz; JBTS19; NPHP14; OAZ; Roaz; Zfp104; ZFP423
Note:	Immunogen Sequence Homology: Dog: 100%; Pig: 100%; Rat: 100%; Horse: 100%; Human: 100%; Mouse: 100%; Bovine: 100%; Rabbit: 100%; Guinea pig: 100%; Zebrafish: 93%



[View online »](#)

## Product images:



WB Suggested Anti-ZNF423 Antibody Titration:  
0.2-1 ug/ml; ELISA Titer: 1: 312500; Positive  
Control: HT1080 cell lysate