

Product datasheet for **TA343754**

Smad Interacting Protein 1 (ZEB2) Rabbit Polyclonal Antibody

Product data:

Product Type:	Primary Antibodies
Applications:	IHC, WB
Recommended Dilution:	WB, IHC
Reactivity:	Human
Host:	Rabbit
Isotype:	IgG
Clonality:	Polyclonal
Immunogen:	The immunogen for anti-ZEB2 antibody: synthetic peptide directed towards the middle region of human ZEB2. Synthetic peptide located within the following region: LGRQDGDEEFEEEESEENKSMDDTDPETIRDEEETGDHSMDDSSSEDGKME
Formulation:	Liquid. Purified antibody supplied in 1x PBS buffer with 0.09% (w/v) sodium azide and 2% sucrose. <i>Note that this product is shipped as lyophilized powder to China customers.</i>
Purification:	Affinity Purified
Conjugation:	Unconjugated
Storage:	Store at -20°C as received.
Stability:	Stable for 12 months from date of receipt.
Predicted Protein Size:	136 kDa
Gene Name:	zinc finger E-box binding homeobox 2
Database Link:	NP_055610 Entrez Gene 9839 Human O60315



[View online »](#)

Background:

The ZFHX1B gene is a member of the delta-EF1/Zfh1 family of 2-handed zinc finger/homeodomain proteins. ZFHX1B is strongly transcribed at an early stage in the developing peripheral and central nervous systems of both mice and humans, in all neuronal regions of the brains of 25-week human fetuses and adult mice, and in numerous nonneural tissues. The SMADIP1 gene (also known as SIP1) is a member of the delta-EF1 (ZEB1; MIM 189909)/Zfh1 family of 2-handed zinc finger/homeodomain proteins. SMADIP1 interacts with receptor-mediated, activated full-length SMADs (see MIM 605568) (Verschueren et al., 1999 [PubMed 10400677]). [supplied by OMIM]. Publication Note: This RefSeq record includes a subset of the publications that are available for this gene. Please see the Entrez Gene record to access additional publications. PRIMARYREFSEQ_SPAN PRIMARY_IDENTIFIER PRIMARY_SPAN COMP 1-58 AB056507.1 1-58 59-553 AL118674.1 57-551 554-5558 AB056507.1 553-5557 5559-5583 AI858477.1 1-25 c

Synonyms:

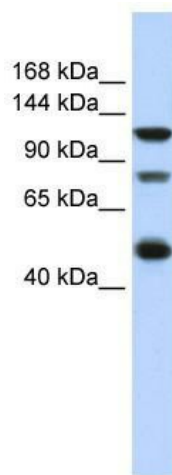
HSPC082; SIP-1; SIP1; SMADIP1; ZFHX1B

Note:

Immunogen Sequence Homology: Pig: 100%; Rat: 100%; Horse: 100%; Human: 100%; Mouse: 100%; Bovine: 100%; Guinea pig: 93%; Zebrafish: 79%

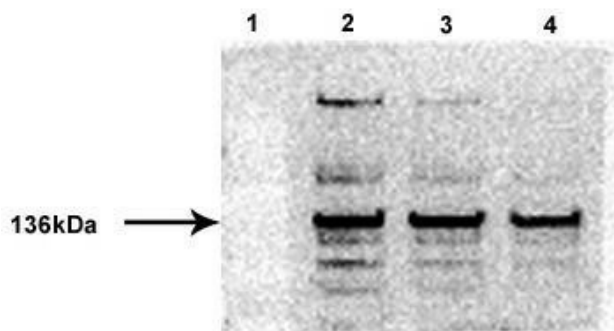
Protein Families:

Druggable Genome, Transcription Factors

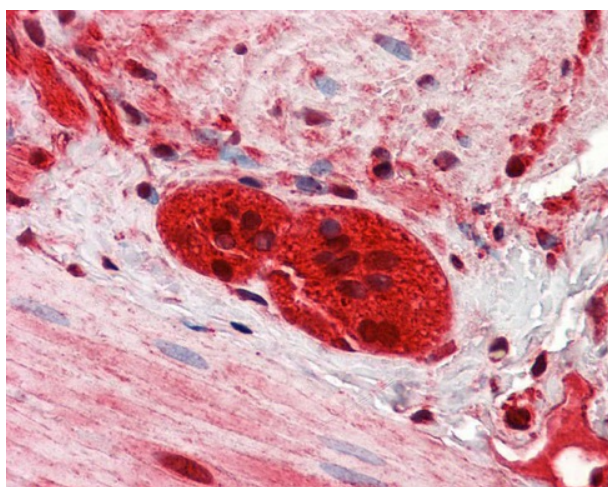
Product images:

WB Suggested Anti-ZEB2 Antibody Titration: 0.2-1 ug/ml; ELISA Titer: 1: 62500; Positive Control: Hela cell lysate

ZEB2



ZEB2 antibody - middle region validated by WB using H9 human embryonic stem cells at 1: 1000.



IHC Information: Paraffin embedded small intestine, myenteric plexus tissue, tested with an antibody Dilution of 2.5 ug/ml.