

Product datasheet for **TA343752**

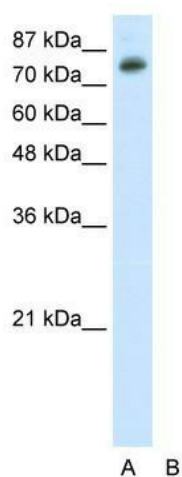
TSC22D2 Rabbit Polyclonal Antibody

Product data:

Product Type:	Primary Antibodies
Applications:	WB
Recommended Dilution:	WB
Reactivity:	Human
Host:	Rabbit
Isotype:	IgG
Clonality:	Polyclonal
Immunogen:	The immunogen for anti-TSC22D2 antibody: synthetic peptide directed towards the N terminal of human TSC22D2. Synthetic peptide located within the following region: CFQITSVTTAQVATSITEDTESLDDPDESRTEDVSSEIFDVS RATDYGPE
Formulation:	Liquid. Purified antibody supplied in 1x PBS buffer with 0.09% (w/v) sodium azide and 2% sucrose. <i>Note that this product is shipped as lyophilized powder to China customers.</i>
Purification:	Affinity Purified
Conjugation:	Unconjugated
Storage:	Store at -20°C as received.
Stability:	Stable for 12 months from date of receipt.
Predicted Protein Size:	79 kDa
Gene Name:	TSC22 domain family member 2
Database Link:	NP_055594 Entrez Gene 9819 Human O75157
Background:	TSC22D2 belongs to the TSC-22/Dip/Bun family and the function remains unknown.
Synonyms:	TILZ4a; TILZ4b; TILZ4c
Note:	Immunogen Sequence Homology: Dog: 100%; Pig: 100%; Rat: 100%; Human: 100%; Mouse: 100%; Bovine: 100%; Rabbit: 100%; Guinea pig: 100%; Zebrafish: 87%
Protein Families:	Transcription Factors



[View online »](#)

Product images:

WB Suggested Anti-TSC22D2 Antibody Titration:
0.2-1 ug/ml; ELISA Titer: 1: 12500; Positive
Control: HepG2 cell lysate