

Product datasheet for **TA343751**

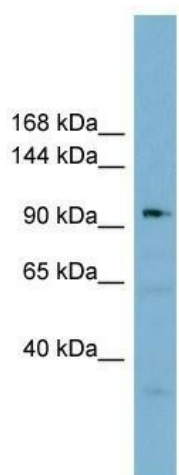
SART3 Rabbit Polyclonal Antibody

Product data:

Product Type:	Primary Antibodies
Applications:	WB
Recommended Dilution:	WB
Reactivity:	Human
Host:	Rabbit
Isotype:	IgG
Clonality:	Polyclonal
Immunogen:	The immunogen for anti-SART3 antibody: synthetic peptide directed towards the middle region of human SART3. Synthetic peptide located within the following region: LSLLPRALQRPSAAAPQAENGPAAAPAVAAPAATEAPKMSNADFAKLFLR
Formulation:	Liquid. Purified antibody supplied in 1x PBS buffer with 0.09% (w/v) sodium azide and 2% sucrose. <i>Note that this product is shipped as lyophilized powder to China customers.</i>
Purification:	Affinity Purified
Conjugation:	Unconjugated
Storage:	Store at -20°C as received.
Stability:	Stable for 12 months from date of receipt.
Predicted Protein Size:	110 kDa
Gene Name:	squamous cell carcinoma antigen recognized by T-cells 3
Database Link:	NP_055521 Entrez Gene 9733 Human Q15020
Background:	SART3 is an RNA-binding nuclear protein that is a tumor-rejection antigen. This antigen possesses tumor epitopes capable of inducing HLA-A24-restricted and tumor-specific cytotoxic T lymphocytes in cancer patients and may be useful for specific immunother
Synonyms:	DSAP1; P100; p110; p110(nrb); RP11-13G14; TIP110
Note:	Immunogen Sequence Homology: Dog: 100%; Pig: 100%; Rat: 100%; Human: 100%; Horse: 93%; Rabbit: 93%; Bovine: 92%; Mouse: 87%; Guinea pig: 76%



[View online »](#)

Product images:

WB Suggested Anti-SART3 Antibody Titration: 0.2-1 ug/ml; ELISA Titer: 1: 312500; Positive Control: HT1080 cell lysate; SART3 is strongly supported by BioGPS gene expression data to be expressed in Human HT1080 cells