

Product datasheet for **TA343750**

SART3 Rabbit Polyclonal Antibody

Product data:

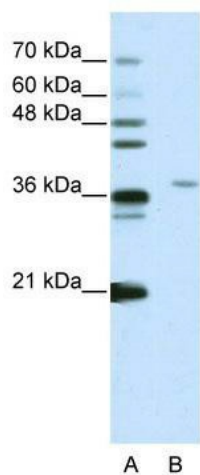
Product Type:	Primary Antibodies
Applications:	IHC, WB
Recommended Dilution:	WB, IHC
Reactivity:	Human
Host:	Rabbit
Isotype:	IgG
Clonality:	Polyclonal
Immunogen:	The immunogen for anti-SART3 antibody: synthetic peptide directed towards the N terminal of human SART3. Synthetic peptide located within the following region: TSASEPEAESKAGPKADGEEDEVKAARTRRKVLRAVAAAATYKTMGPAWD
Formulation:	Liquid. Purified antibody supplied in 1x PBS buffer with 0.09% (w/v) sodium azide and 2% sucrose. <i>Note that this product is shipped as lyophilized powder to China customers.</i>
Purification:	Protein A purified
Conjugation:	Unconjugated
Storage:	Store at -20°C as received.
Stability:	Stable for 12 months from date of receipt.
Predicted Protein Size:	40 kDa
Gene Name:	squamous cell carcinoma antigen recognized by T-cells 3
Database Link:	NP_055521 Entrez Gene 9733 Human Q15020



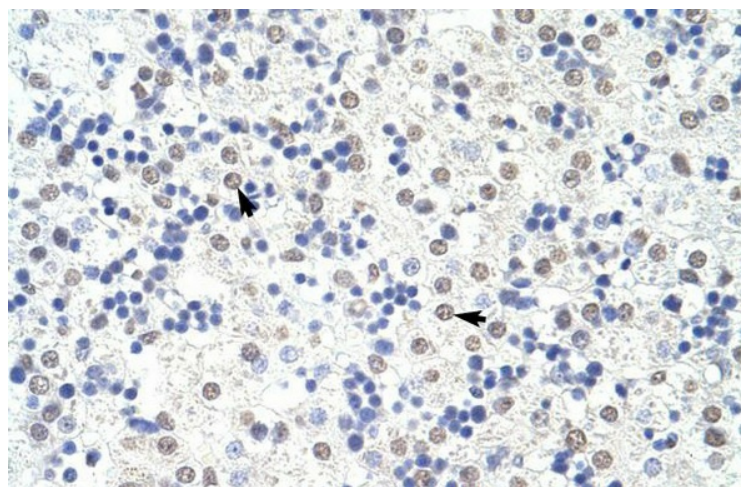
[View online »](#)

- Background:** SART3 is an RNA-binding nuclear protein that is a tumor-rejection antigen. This antigen possesses tumor epitopes capable of inducing HLA-A24-restricted and tumor-specific cytotoxic T lymphocytes in cancer patients and may be useful for specific immunotherapy. SART3 is found to be an important cellular factor for HIV-1 gene expression and viral replication. It also associates transiently with U6 and U4/U6 snRNPs during the recycling phase of the spliceosome cycle. This protein is thought to be involved in the regulation of mRNA splicing.
- Synonyms:** DSAP1; P100; p110; p110(nrb); RP11-13G14; TIP110
- Note:** Immunogen Sequence Homology: Human: 100%; Pig: 86%; Rat: 79%; Horse: 79%; Guinea pig: 79%; Dog: 77%

Product images:



WB Suggested Anti-SART3 Antibody Titration: 2.5 ug/ml; ELISA Titer: 1: 62500; Positive Control: Jurkat cell lysate; SART3 is strongly supported by BioGPS gene expression data to be expressed in Human Jurkat cells



Human Liver