

Product datasheet for **TA343744**

CDRL2 (CDR2L) Rabbit Polyclonal Antibody

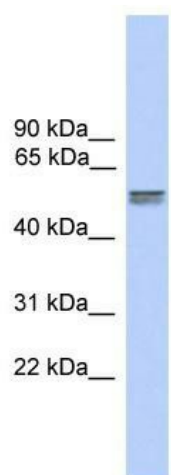
Product data:

Product Type:	Primary Antibodies
Applications:	WB
Recommended Dilution:	WB
Reactivity:	Human
Host:	Rabbit
Isotype:	IgG
Clonality:	Polyclonal
Immunogen:	The immunogen for anti-CDR2L antibody: synthetic peptide directed towards the N terminal of human CDR2L. Synthetic peptide located within the following region: MRRAAGMEDFSAEEEEWYDQQDLEQLHLAAELGKTLLEARNKELEGLSQ
Formulation:	Liquid. Purified antibody supplied in 1x PBS buffer with 0.09% (w/v) sodium azide and 2% sucrose. <i>Note that this product is shipped as lyophilized powder to China customers.</i>
Purification:	Affinity Purified
Conjugation:	Unconjugated
Storage:	Store at -20°C as received.
Stability:	Stable for 12 months from date of receipt.
Predicted Protein Size:	53 kDa
Gene Name:	cerebellar degeneration related protein 2 like
Database Link:	NP_055418 Entrez Gene 30850 Human Q86X02
Background:	The function of CDR2L remains unknown.
Synonyms:	HUMPPA
Note:	Immunogen Sequence Homology: Human: 100%; Dog: 93%; Pig: 93%; Rat: 93%; Horse: 93%; Mouse: 93%; Bovine: 93%; Guinea pig: 93%; Zebrafish: 86%



[View online »](#)

Product images:



WB Suggested Anti-CDR2L Antibody Titration: 0.2-1 ug/ml; ELISA Titer: 1: 62500; Positive Control: Human Small Intestine