

Product datasheet for **TA343743**

CGBP (CXXC1) Rabbit Polyclonal Antibody

Product data:

| | |
|--------------------------------|--|
| Product Type: | Primary Antibodies |
| Applications: | WB |
| Recommended Dilution: | WB |
| Reactivity: | Human |
| Host: | Rabbit |
| Isotype: | IgG |
| Clonality: | Polyclonal |
| Immunogen: | The immunogen for anti-CXXC1 antibody: synthetic peptide directed towards the C terminal of human CXXC1. Synthetic peptide located within the following region: RVWYKLDELFEQERNVRTAMTNRAGLLALMLHQTIQHDPLTTDLRSSADR |
| Formulation: | Liquid. Purified antibody supplied in 1x PBS buffer with 0.09% (w/v) sodium azide and 2% sucrose. <i>Note that this product is shipped as lyophilized powder to China customers.</i> |
| Purification: | Protein A purified |
| Conjugation: | Unconjugated |
| Storage: | Store at -20°C as received. |
| Stability: | Stable for 12 months from date of receipt. |
| Predicted Protein Size: | 76 kDa |
| Gene Name: | CXXC finger protein 1 |
| Database Link: | NP_055408 Entrez Gene 30827 Human Q9P0U4 |
| Background: | Proteins that contain a CXXC motif within their DNA-binding domain, such as CXXC1, recognize CpG sequences and regulate gene expression. Proteins that contain a CXXC motif within their DNA-binding domain, such as CXXC1, recognize CpG sequences and regulate gene expression (Carlone and Skalnik, 2001). [supplied by OMIM] |
| Synonyms: | 2410002I16Rik; 5830420C16Rik; CFP1; CGBP; hCGBP; HsT2645; PCCX1; PHF18; SPP1; ZCGPC1 |

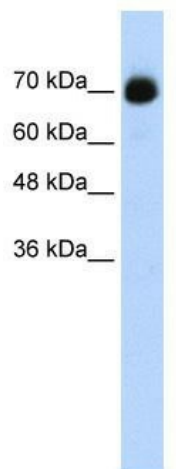


[View online »](#)

Note: Immunogen Sequence Homology: Dog: 100%; Pig: 100%; Rat: 100%; Horse: 100%; Human: 100%; Mouse: 100%; Rabbit: 100%; Guinea pig: 100%; Zebrafish: 93%; Goat: 86%; Bovine: 86%

Protein Families: Druggable Genome, Transcription Factors

Product images:



WB Suggested Anti-CXXC1 Antibody Titration:
0.625 ug/ml; ELISA Titer: 1: 62500; Positive
Control: Transfected 293T