

Product datasheet for **TA343740**

OTX1 Rabbit Polyclonal Antibody

Product data:

Product Type:	Primary Antibodies
Applications:	WB
Recommended Dilution:	WB
Reactivity:	Human
Host:	Rabbit
Isotype:	IgG
Clonality:	Polyclonal
Immunogen:	The immunogen for anti-OTX1 antibody: synthetic peptide directed towards the C terminal of human OTX1. Synthetic peptide located within the following region: HHQGYGGSGLAFNSADCLDYKEPGAAAASSAWKLNFNSPDCLDYKDQASW
Formulation:	Liquid. Purified antibody supplied in 1x PBS buffer with 0.09% (w/v) sodium azide and 2% sucrose. <i>Note that this product is shipped as lyophilized powder to China customers.</i>
Purification:	Affinity Purified
Conjugation:	Unconjugated
Storage:	Store at -20°C as received.
Stability:	Stable for 12 months from date of receipt.
Predicted Protein Size:	37 kDa
Gene Name:	orthodenticle homeobox 1
Database Link:	NP_055377 Entrez Gene 5013 Human P32242



[View online »](#)

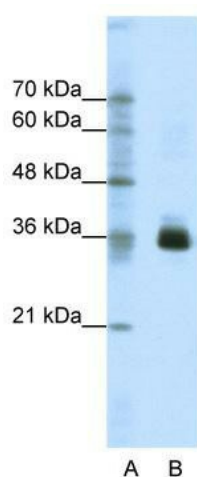
Background: OTX1 is a member of the bicoid sub-family of homeodomain-containing transcription factors. OTX1 acts as a transcription factor and may play a role in brain and sensory organ development. A similar protein in mice is required for proper brain and sensory organ development and can cause epilepsy. This gene encodes a member of the bicoid sub-family of homeodomain-containing transcription factors. The encoded protein acts as a transcription factor and may play a role in brain and sensory organ development. A similar protein in mice is required for proper brain and sensory organ development and can cause epilepsy.

Synonyms: FLJ38361; MGC15736

Note: Immunogen Sequence Homology: Dog: 100%; Pig: 100%; Rat: 100%; Horse: 100%; Human: 100%; Mouse: 100%; Bovine: 100%; Sheep: 93%; Zebrafish: 83%

Protein Families: Druggable Genome, Transcription Factors

Product images:



WB Suggested Anti-OTX1 Antibody Titration: 1.25 ug/ml; ELISA Titer: 1: 1562500; Positive Control: Jurkat cell lysate