

Product datasheet for **TA343734**

AKAP8L Rabbit Polyclonal Antibody

Product data:

Product Type:	Primary Antibodies
Applications:	IHC, WB
Recommended Dilution:	WB, IHC
Reactivity:	Human
Host:	Rabbit
Isotype:	IgG
Clonality:	Polyclonal
Immunogen:	The immunogen for anti-AKAP8L antibody: synthetic peptide directed towards the C terminal of human AKAP8L. Synthetic peptide located within the following region: APGAVSPPPPPPEEEEEGAVPLLGGALQRQIRGIPGLDVEDDEEGGGGA
Formulation:	Liquid. Purified antibody supplied in 1x PBS buffer with 0.09% (w/v) sodium azide and 2% sucrose. <i>Note that this product is shipped as lyophilized powder to China customers.</i>
Purification:	Affinity Purified
Conjugation:	Unconjugated
Storage:	Store at -20°C as received.
Stability:	Stable for 12 months from date of receipt.
Predicted Protein Size:	72 kDa
Gene Name:	A-kinase anchoring protein 8 like
Database Link:	NP_055186 Entrez Gene 26993 Human Q9ULX6
Background:	AKAP8L could play a role in constitutive transport element (CTE)-mediated gene expression. It does not seem to be implicated in the binding of regulatory subunit II of PKA. It may be involved in nuclear envelope breakdown and chromatin condensation. It may regulate the initiation phase of DNA replication when associated with TMPO-beta.
Synonyms:	HA95; HAP95; NAKAP; NAKAP95

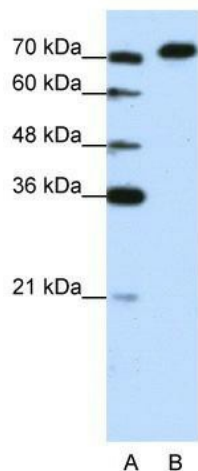


[View online »](#)

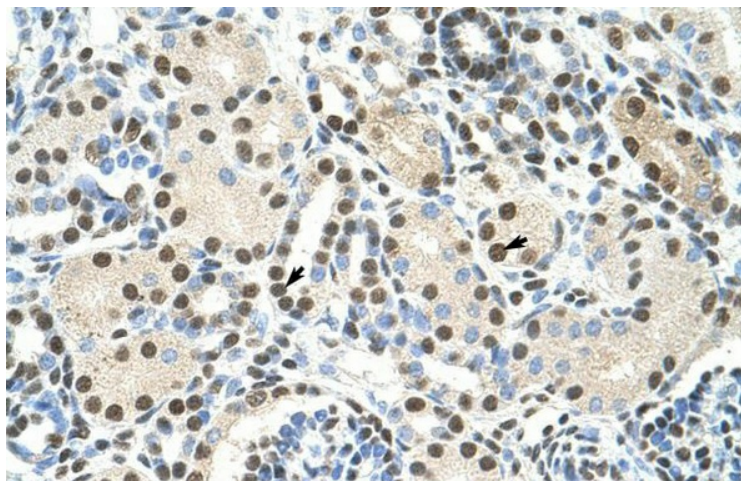
Note: Immunogen Sequence Homology: Rat: 100%; Human: 100%; Rabbit: 100%; Pig: 93%; Mouse: 93%; Dog: 88%; Bovine: 88%; Horse: 87%

Protein Families: Druggable Genome

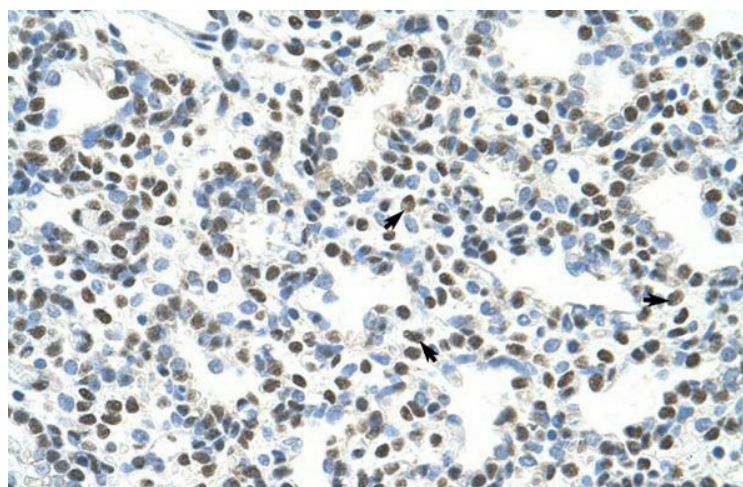
Product images:



WB Suggested Anti-AKAP8L Antibody Titration: 1.25 ug/ml; Positive Control: Jurkat cell lysate



Human kidney



Human Lung