

## Product datasheet for **TA343732**

### **PATZ1 Rabbit Polyclonal Antibody**

#### **Product data:**

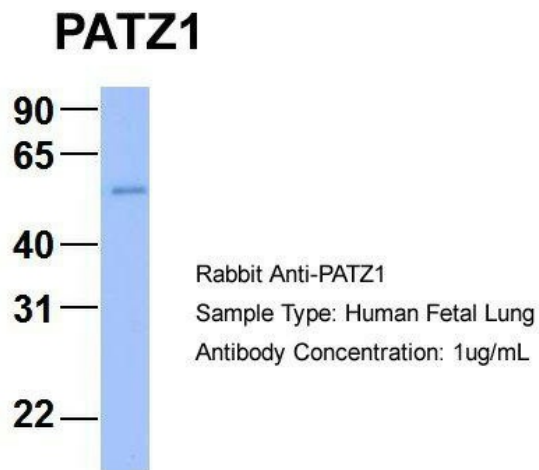
<b>Product Type:</b>	Primary Antibodies
<b>Applications:</b>	WB
<b>Recommended Dilution:</b>	WB
<b>Reactivity:</b>	Human
<b>Host:</b>	Rabbit
<b>Isotype:</b>	IgG
<b>Clonality:</b>	Polyclonal
<b>Immunogen:</b>	The immunogen for anti-PATZ1 antibody: synthetic peptide directed towards the N terminal of human PATZ1. Synthetic peptide located within the following region: MERVNDASCGPSGCYTYQVSRHSTEMLHNLNQQRKNGGRFCDVLLRVGDE
<b>Formulation:</b>	Liquid. Purified antibody supplied in 1x PBS buffer with 0.09% (w/v) sodium azide and 2% sucrose. <i>Note that this product is shipped as lyophilized powder to China customers.</i>
<b>Purification:</b>	Affinity Purified
<b>Conjugation:</b>	Unconjugated
<b>Storage:</b>	Store at -20°C as received.
<b>Stability:</b>	Stable for 12 months from date of receipt.
<b>Predicted Protein Size:</b>	74 kDa
<b>Gene Name:</b>	POZ/BTB and AT hook containing zinc finger 1
<b>Database Link:</b>	<a href="#">NP_055138</a> <a href="#">Entrez Gene 23598 Human</a> <a href="#">Q9HBE1</a>
<b>Background:</b>	PATZ1 contains an A-T hook DNA binding motif which usually binds to other DNA binding structures to play an important role in chromatin modeling and transcription regulation. Its Poz domain is thought to function as a site for protein-protein interaction
<b>Synonyms:</b>	dj400N23; MAZR; PATZ; RIAZ; ZBTB19; ZNF278; ZSG
<b>Note:</b>	Immunogen Sequence Homology: Dog: 100%; Pig: 100%; Rat: 100%; Horse: 100%; Human: 100%; Mouse: 100%; Bovine: 100%; Rabbit: 100%; Guinea pig: 100%; Zebrafish: 79%



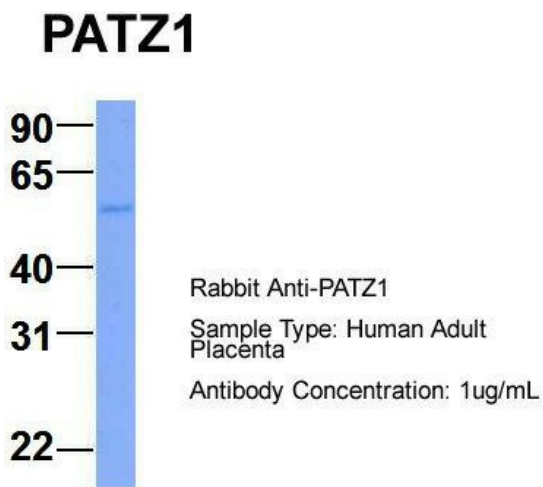
[View online »](#)

Protein Families: Transcription Factors

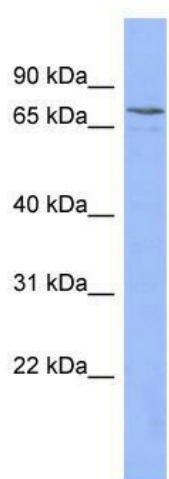
**Product images:**



Host: Rabbit; Target Name: PATZ1; Sample Tissue: Human Fetal Lung; Antibody Dilution: 1.0 ug/ml



Host: Rabbit; Target Name: PATZ1; Sample Tissue: Human Adult Placenta; Antibody Dilution: 1.0 ug/ml



WB Suggested Anti-PATZ1 Antibody Titration: 0.2-1 ug/ml; ELISA Titer: 1: 62500; Positive Control: HT1080 cell lysate; There is BioGPS gene expression data showing that PATZ1 is expressed in HT1080