

Product datasheet for **TA343728**

CBX6 Rabbit Polyclonal Antibody

Product data:

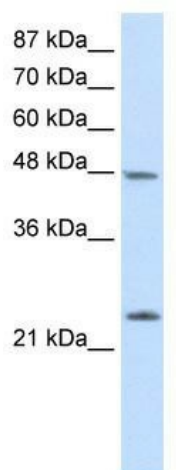
Product Type:	Primary Antibodies
Applications:	IHC, WB
Recommended Dilution:	WB, IHC
Reactivity:	Human
Host:	Rabbit
Isotype:	IgG
Clonality:	Polyclonal
Immunogen:	The immunogen for anti-CBX6 antibody: synthetic peptide directed towards the N terminal of human CBX6. Synthetic peptide located within the following region: FAAESIIKRRIRKGRIEYLVKWKGWAIKYSTWEPEENILDSRLIAAFEQK
Formulation:	Liquid. Purified antibody supplied in 1x PBS buffer with 0.09% (w/v) sodium azide and 2% sucrose. <i>Note that this product is shipped as lyophilized powder to China customers.</i>
Purification:	Affinity Purified
Conjugation:	Unconjugated
Storage:	Store at -20°C as received.
Stability:	Stable for 12 months from date of receipt.
Predicted Protein Size:	44 kDa
Gene Name:	chromobox 6
Database Link:	NP_055107 Entrez Gene 23466 Human O95503
Background:	CBX6 is involved in maintaining the transcriptionally repressive state of genes. It modifies chromatin, rendering it heritably changed in its expressibility.
Synonyms:	chromobox homolog 6; OTTHUMP00000028667
Note:	Immunogen Sequence Homology: Dog: 100%; Pig: 100%; Rat: 100%; Horse: 100%; Human: 100%; Mouse: 100%; Bovine: 100%; Rabbit: 100%; Zebrafish: 100%; Guinea pig: 100%



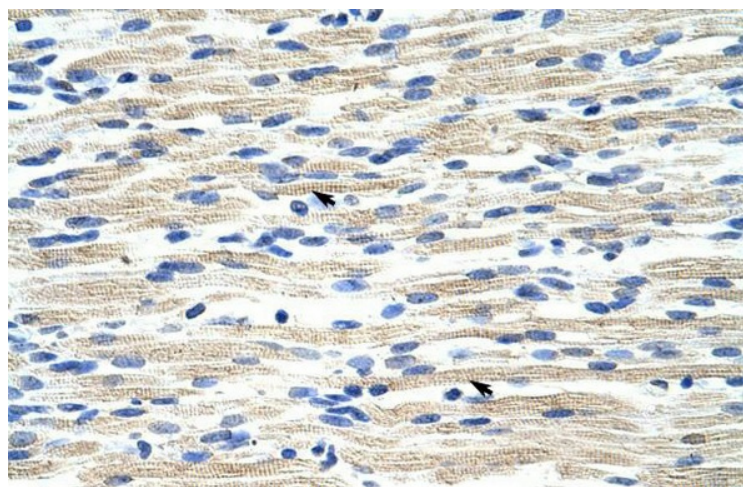
[View online »](#)

Protein Families: Transcription Factors

Product images:



WB Suggested Anti-CBX6 Antibody Titration: 2.5 ug/ml; Positive Control: HepG2 cell lysate



Human Muscle