

Product datasheet for **TA343724**

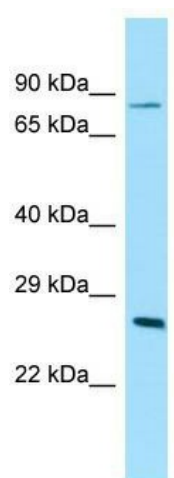
Ubtf Rabbit Polyclonal Antibody

Product data:

Product Type:	Primary Antibodies
Applications:	WB
Recommended Dilution:	WB
Reactivity:	Rat
Host:	Rabbit
Isotype:	IgG
Clonality:	Polyclonal
Immunogen:	The immunogen for Anti-Ubtf antibody is: synthetic peptide directed towards the N-terminal region of Rat Ubtf. Synthetic peptide located within the following region: TDLEMAAPKQGDRWSQEDMLTLLECMKNNLPSNDSKFKTTESHMDWEKV
Formulation:	Liquid. Purified antibody supplied in 1x PBS buffer with 0.09% (w/v) sodium azide and 2% sucrose. <i>Note that this product is shipped as lyophilized powder to China customers.</i>
Purification:	Affinity Purified
Conjugation:	Unconjugated
Storage:	Store at -20°C as received.
Stability:	Stable for 12 months from date of receipt.
Predicted Protein Size:	79 kDa
Gene Name:	upstream binding transcription factor, RNA polymerase I
Database Link:	NP_001099193 Entrez Gene 25574 Rat P25977
Background:	Ubtf mediates transcription initiation by RNA polymerase I.
Synonyms:	NOR-90; UBF; UBF-1; UBF1
Note:	Immunogen Sequence Homology: Dog: 100%; Pig: 100%; Rat: 100%; Horse: 100%; Human: 100%; Mouse: 100%; Bovine: 100%; Rabbit: 100%; Guinea pig: 100%



[View online »](#)

Product images:

Host: Rabbit; Target Name: Ubtf; Sample Tissue: Rat Spleen lysates; Antibody Dilution: 1.0 ug/ml