

Product datasheet for **TA343722**

NFYC Rabbit Polyclonal Antibody

Product data:

Product Type:	Primary Antibodies
Applications:	WB
Recommended Dilution:	WB
Reactivity:	Human
Host:	Rabbit
Isotype:	IgG
Clonality:	Polyclonal
Immunogen:	The immunogen for Anti-NFYC antibody is: synthetic peptide directed towards the N-terminal region of Human NFYC. Synthetic peptide located within the following region: EGGFGGTSSSDAQQSLQSFWRVMEIIRNLTVKDFRVQELPLARIKKIMK
Formulation:	Liquid. Purified antibody supplied in 1x PBS buffer with 0.09% (w/v) sodium azide and 2% sucrose. <i>Note that this product is shipped as lyophilized powder to China customers.</i>
Purification:	Affinity Purified
Conjugation:	Unconjugated
Storage:	Store at -20°C as received.
Stability:	Stable for 12 months from date of receipt.
Predicted Protein Size:	48 kDa
Gene Name:	nuclear transcription factor Y subunit gamma
Database Link:	NP_055038 Entrez Gene 4802 Human Q13952
Background:	NFYC is one subunit of a trimeric complex, forming a highly conserved transcription factor that binds with high specificity to CCAAT motifs in the promoter regions in a variety of genes. NFYC forms a tight dimer with the B subunit, a prerequisite for subunit A association. The resulting trimer binds to DNA with high specificity and affinity.
Synonyms:	CBF-C; CBFC; H1TF2A; HAP5; HSM; NF-YC



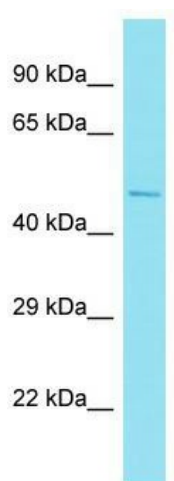
[View online »](#)

Note: Immunogen Sequence Homology: Dog: 100%; Pig: 100%; Rat: 100%; Horse: 100%; Human: 100%; Mouse: 100%; Bovine: 100%; Rabbit: 100%; Zebrafish: 100%; Guinea pig: 100%

Protein Families: Transcription Factors

Protein Pathways: Antigen processing and presentation

Product images:



Host: Rabbit; Target Name: NFYC; Sample Tissue: Liver Tumor lysates; Antibody Dilution: 1.0 ug/ml