

Product datasheet for **TA343720**

Zbtb44 Rabbit Polyclonal Antibody

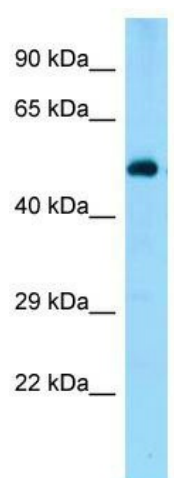
Product data:

Product Type:	Primary Antibodies
Applications:	WB
Recommended Dilution:	WB
Reactivity:	Rat
Host:	Rabbit
Isotype:	IgG
Clonality:	Polyclonal
Immunogen:	The immunogen for Anti-Zbtb44 antibody is: synthetic peptide directed towards the N-terminal region of Rat Zbtb44. Synthetic peptide located within the following region: VKTFTHSSSSHSQEMLGKLNMLRNDGHFCDITIRVQDRIFRAHKVLAAC
Formulation:	Liquid. Purified antibody supplied in 1x PBS buffer with 0.09% (w/v) sodium azide and 2% sucrose. <i>Note that this product is shipped as lyophilized powder to China customers.</i>
Purification:	Affinity Purified
Conjugation:	Unconjugated
Storage:	Store at -20°C as received.
Stability:	Stable for 12 months from date of receipt.
Predicted Protein Size:	49 kDa
Gene Name:	zinc finger and BTB domain containing 44
Database Link:	NP_001030114 Entrez Gene 363035 Rat Q3SWU4
Background:	The function of this protein remains unknown.
Synonyms:	BTBD15; HSPC063; MGC26123; MGC57431; MGC60348; MGC88058; ZNF851
Note:	Immunogen Sequence Homology: Dog: 100%; Pig: 100%; Rat: 100%; Horse: 100%; Human: 100%; Mouse: 100%; Bovine: 100%; Rabbit: 100%; Guinea pig: 100%



[View online »](#)

Product images:



WB Suggested Anti-Zbtb44 Antibody; Titration:
1.0 ug/ml; Positive Control: Rat Heart